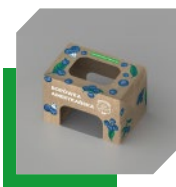


Sustainable pack



Product catalog

Packaging that not only meets the requirements of the modern market but also contributes to environmental protection and sustainable development.



CompostTray™ and RecyklingTray™ trays



Industrial crates

Table of Contents

Introduction

About the Sustainable Pack	4
----------------------------	---

CompostTray™ and RecyklingTray™ trays

Presentation of the project idea	6
CompostTray™	7
RecyklingTray™	8
Ecological features	9
Certificates	10
Comparison with other packaging available on the market	11
Possibility of applying barrier coating	12

Industrial crates

Presentation of the project idea	14
Folding mechanism	15
Packaging durability	17
Difference in logistics	18

Ecological aspects

Digi-Pack company philosophy	20
Consumer research	21

Production capabilities of Digi-Pack

Printing	23
Packaging personalization	24
Volumes	25

Packaging designs

CompostTray™ Tray Size 125g	27
CompostTray™ Tray Size 250g	29
CompostTray™ Tray Size 500g	31
RecyklingTray™ Tray Size 125g	33
RecyklingTray™ Tray Size 250g	35
RecyklingTray™ Tray Size 500g	37
Crashlock Tray 125g	39
Crashlock Tray 250g	41
Crashlock Tray 500g	43
Industrial Crate 300×200×100 with full bottom	45
Industrial Crate 400×300×150 with holes for stacking	47
Industrial Crate 400×300×150	49
Industrial Crate 600×400×100	51
Industrial Crate 600×400×135	53
Industrial Crate 600×400×150	55
Industrial Crate 600×400×175	57
Industrial Crate 600×400×220	59
Fruit Basket 1500g	61

Optional machines for folding packaging

Explore automation possibilities	66
Automated line	67
Unfolding robot	68

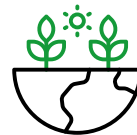
Sustainable pack

Sustainable Pack is a brand created out of passion and commitment to bringing change to the packaging market. Our offering includes innovative solid and corrugated cardboard packaging, dedicated to the fresh produce industry.



The creator of the brand is **Digi-Pack**, a company whose founder has been operating in the packaging market in Poland and Europe for 25 years.

Based on our experience and the needs of our clients, we have created our own patented and registered packaging designs that meet the highest ecological standards.



As consumer environmental awareness grows, Sustainable Pack leads the way by offering products that are characterized by the **highest level of sustainability, taking care of our planet and significantly reducing CO2 emissions.**



Discover **our packaging** 



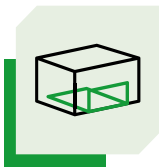
CompostTray™ and RecyklingTray™ Trays

- › Presentation of the project idea
- › Packaging benefits
- › Ecological features
- › Certificates
- › Comparison with other packaging available on the market
- › Information on the possibility of applying a barrier coating

Presentation of the project idea

Our **CompostTray™** and **RecyklingTray™** trays are designed with the environment, sustainable development, and optimal presentation of fresh produce in mind. Every aspect of their design and the materials used in production has been carefully considered to meet the growing demands of both producers and consumers seeking the most ecological solutions.

Discover the unique features of our trays:



Transparent bottom and sides

For better product presentation inside or the option without windows.



Hydrophobic barrier

Option to apply an ecological hydrophobic barrier



Plastic-free

Our films are 100% home compostable with antifog properties (micro perforations for moisture drainage).



CO2 reduction

We can deliver our trays in a flat form, allowing more to fit on a single pallet.



Innovative manual folding

This packaging can be folded with one hand or by a dedicated folding robot.



Solid or corrugated cardboard

Made from solid or corrugated cardboard.



Any water-based ink printing

The tray can feature any print. We use eco-friendly water-based inks.



CompostTray™ Tray

CompostTray™ is a tray designed for composting in a home composting system. Made from 100% compostable materials, it allows for safe and eco-friendly composting of entire packages after use. It is the perfect solution for producers who want to reduce their environmental impact while offering consumers convenient and aesthetically pleasing packaging.

Unique features of CompostTray™:



Ecology

The most ecological packaging available on the market.



100% compostable home

Our trays are 100% home compostable, including the window.



Two types of closures

Top seal closure or flow pack made from home compostable film.



Hydrophobic barrier

Possibility to apply an ecological hydrophobic barrier.

We can produce CompostTray™ based on your individual needs:

- › Any printing
- › With or without an ecological hydrophobic coating
- › In non-standard sizes
- › From corrugated or solid cardboard



RecyklingTray™ Tray

RecyklingTray™ is a tray designed with the idea of maximizing the use of recycled materials. Made from corrugated cardboard, it features transparent elements made from compostable film, which are completely free from plastics. RecyklingTray™ is not only eco-friendly but also durable and functional, providing excellent protection for fresh produce. By using recycled materials, the tray significantly reduces CO2 emissions and paper consumption, helping to protect natural resources.

Unique features of RecyklingTray™:



Recycled cardboard

Made from paper that is 100% recyclable



Hydrophobic barrier

Option to apply an ecological hydrophobic barrier.



Two types of closures

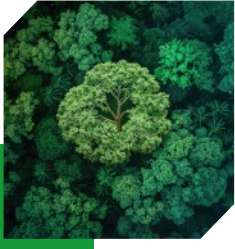
Top seal closure or flow pack made from home compostable film.

We can produce RecyklingTray™ based on your individual needs:

- › Any printing
- › With or without an ecological hydrophobic coating
- › In non-standard sizes
- › From corrugated cardboard



Ecological features



The highest level of ecology and environmental protection

CompostTray™ is an innovative tray that meets the highest ecological standards and ensures exceptional environmental protection. Thanks to its home composting capability, our CompostTray™ trays are an ideal choice for eco-conscious consumers.



Home compostability (HOME)

Our **CompostTray™** trays are designed for ease and convenience in home composting. The process is simple and effective, as the trays break down fully in home composters. This means that after use, instead of ending up in landfills, our trays can be transformed into valuable compost, enriching the soil and completing the material life cycle in a sustainable way.



Carbon footprint reduction

One of the key advantages of **CompostTray™** is its significant reduction of carbon footprint. By using renewable raw materials and composting capabilities, our trays contribute to lowering CO2 emissions throughout the entire product life cycle.

Summary

CompostTray™ is an ecological solution that not only protects fresh products but also supports the protection of our planet. Thanks to home composting capabilities and the significant reduction of the carbon footprint, our trays are the ideal choice for anyone who cares about the environment and the future of our Earth.



Certificates

At Sustainable Pack, we place great emphasis on sustainable development and responsible approaches to packaging production

We hold the FSC (Forest Stewardship Council) certificate, which guarantees that our cardboard packaging comes from responsibly managed forests, meeting the highest environmental standards. Additionally, we are in the process of obtaining the OK compost HOME certification, which will confirm that our packaging is suitable for composting in home conditions. **This is a step forward in our efforts to reduce waste and support the circular economy.**



FSC® Certificate (Forest Stewardship Council)

Guarantees that the wood used to produce our cardboard comes from forests managed in a sustainable way.



OK compost HOME Certificate

Confirms that products marked with this certification decompose in home composting systems without the need for specialized industrial equipment.

In the process of certification



Comparison with other packaging available on the market

Highest Ecological Standards and Quality

In today's world, as consumer ecological awareness grows, choosing the right packaging is key for both producers and clients. **CompostTray™** and **RecyklingTray™** stand out from other packaging available on the market, offering unique ecological and functional features. Below, we present a comparison of our innovative trays with traditional paper trays with a PP film closure and PP trays with a PP film closure.

	CompostTray™	RecyklingTray™	Paper tray + PP film	Plastic tray PP + PP film
Material	100% Paper	100% Paper	Paper + PP film	PP
Compostable home	YES	NO	NO	NO
Recycling	YES	YES	YES (Complicated)	YES (Complicated)
Microplastic	NO	NO	YES	YES
Mono	YES	YES	NO	YES
Complies with PPWR 2025	YES	YES	YES	YES
Complies with PPWR 2030	YES	YES	NO	NO

CompostTray™ and **RecyklingTray™** offer much more ecological and sustainable solutions compared to traditional paper trays with a PP film closure and PP trays with PP film. By choosing our innovative products, producers can significantly reduce their environmental impact, lower CO2 emissions, and promote sustainable development.

Possibility of applying a barrier coating

Ecological Barrier Coating

In our **CompostTray™** and **RecyklingTray™** trays, there is the possibility of applying an innovative, ecological barrier coating. This special coating, which is impermeable to water, has been designed to provide additional protection for fresh products while maintaining full compliance with ecological standards.



Moisture protection

Our barrier coating effectively protects products from moisture, which is key to maintaining their freshness and quality, while also protecting the packaging itself from moisture coming from the products.



Ecological

Made from ecological and compostable materials, the coating poses no threat to the environment. After the tray is used, the entire package can be safely composted.



Food safety

The coating is completely safe for food, contains no harmful chemical substances, and meets all standards for direct food contact packaging.

Application of the Barrier Coating in CompostTray™ and RecyklingTray™

Our **CompostTray™** and **RecyklingTray™** trays, with the optional barrier coating, are the perfect solution for producers of fresh products who are looking for ecological, functional, and versatile packaging. The barrier coating not only increases product protection but also prevents potential damage to the packaging due to moisture from the products.



Industrial Crates

- › Project idea introduction
- › Folding mechanism
- › Packaging durability
- › Logistic differences

Project idea introduction

Industrial packaging has been designed with the idea of maximum efficiency and space-saving. Thanks to the ability to transport them in a “flat” form, the number of packages on a single pallet can be significantly increased. This solution not only optimizes storage space but also reduces transportation costs by decreasing the number of transported pallets. Our Industrial packaging is patented, ensuring the uniqueness and innovation of our products, guaranteeing their highest quality and functionality.



CO2 reduction

We can deliver our crates in a flat form, allowing more to fit on a single pallet.



Recyclable cardboard

Made from 100% recyclable paper.



Reusable

Our packaging can be used multiple times.



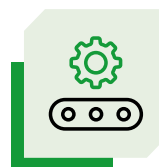
No hot-melt glue

Our patented packaging does not require hot-melt glue to maintain its shape.



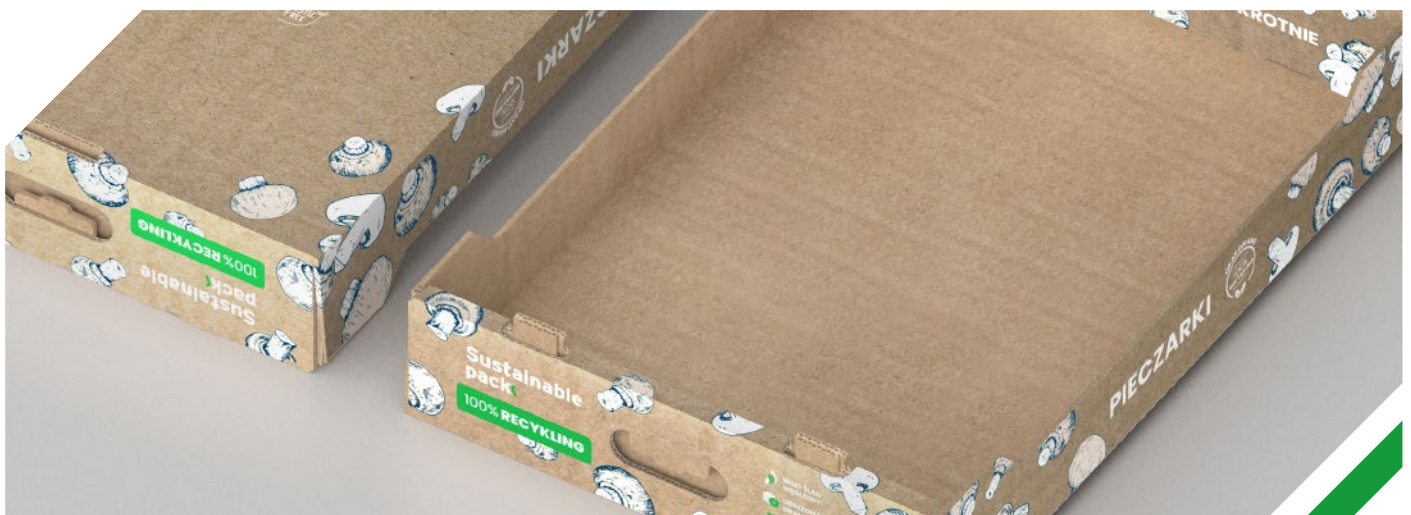
Manual folding capability

This packaging can be folded by hand.



Automatic folding capability

This packaging can be folded by our robot.

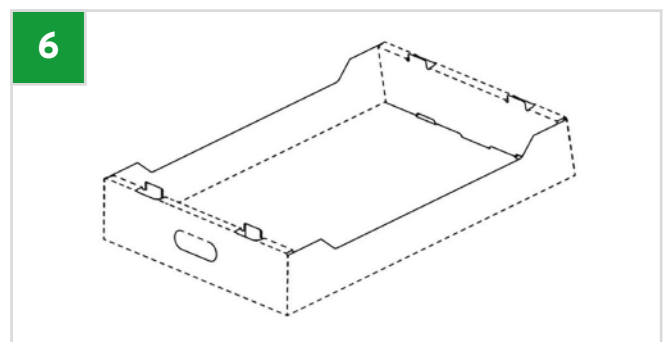
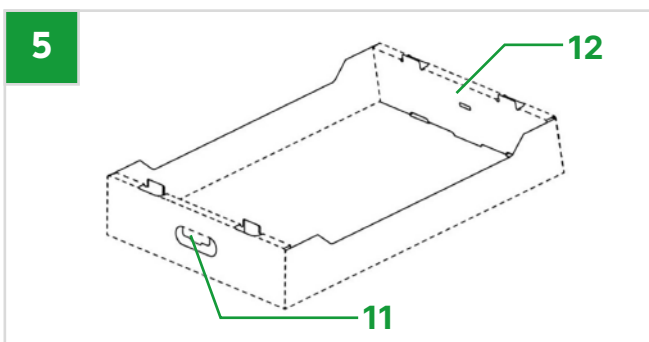
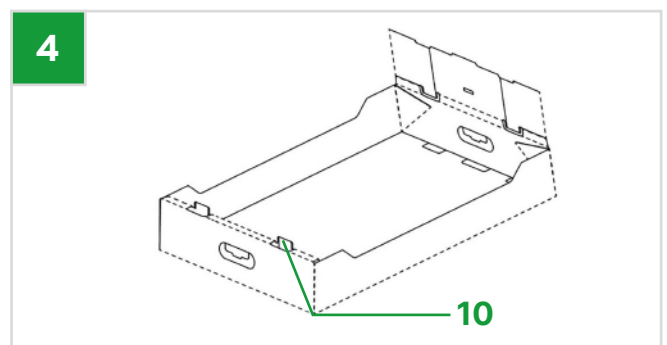
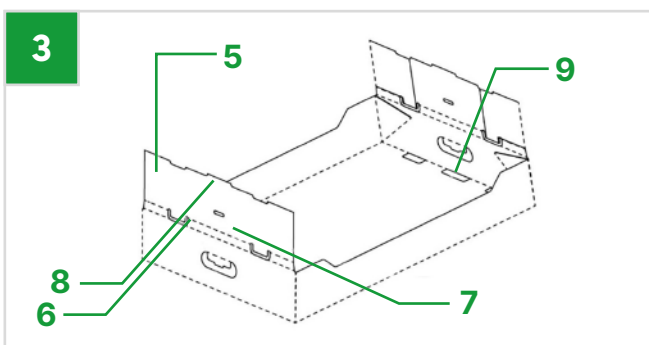
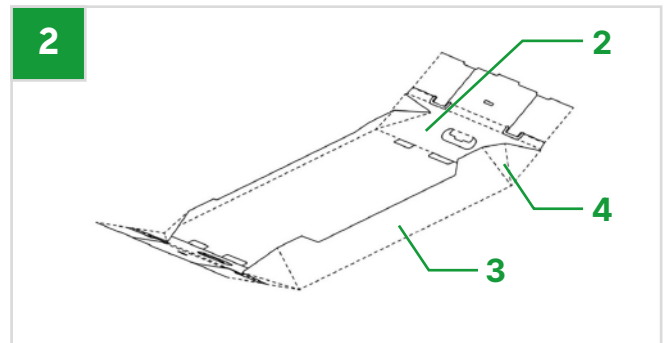
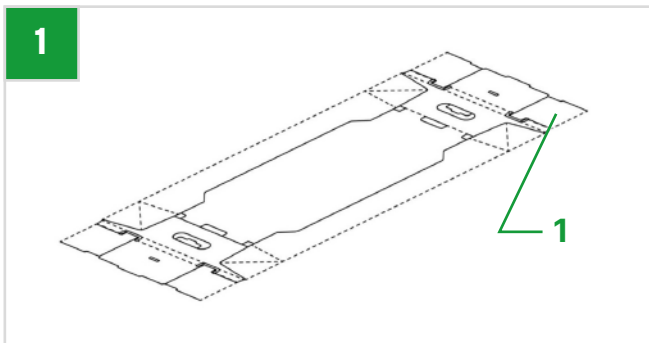


Folding Mechanism

Industrial packaging has been designed with simplicity and user convenience in mind. Our crates can be easily folded both manually and with the use of an optional robot, ensuring flexibility and efficiency in different production conditions.

Manual Folding:

Thanks to thoughtful design, our Industrial packaging can be quickly and easily folded manually. The process is intuitive and does not require specialized tools or significant force. The folding instructions are clear and simple, which helps save time and increase efficiency in small and medium-sized production facilities.



Folding mechanism

To support larger production operations, we offer an automated line or a robot for unfolding packaging, which fully automates the folding process. This dedicated solution is designed with maximum production efficiency in mind and a significant reduction in labor costs associated with manual work. Thanks to their application, it is possible not only to increase production speed but also to ensure precise and repeatable folding of each package. Both the line and the robot significantly improve operational efficiency, minimize the risk of errors and damage, and optimize production processes.

01.

Automation

The robot or automated line quickly and automatically folds the packaging, increasing efficiency and enabling the handling of large orders.

02.

Precision

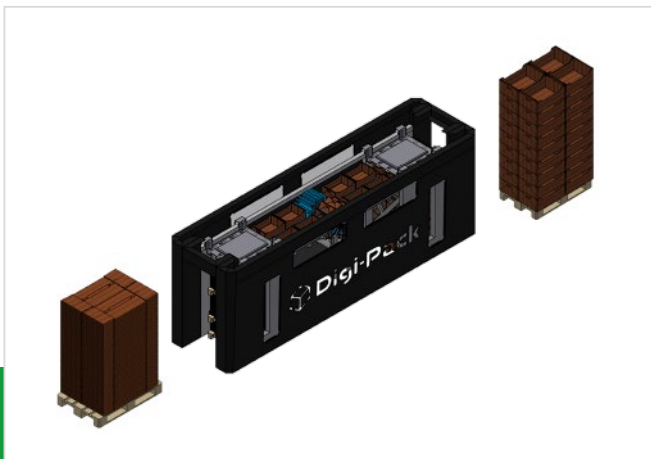
Each package is folded with high precision, minimizing the risk of errors and damage.

03.

Flexibility

The robot and automated line can be easily integrated with existing production lines, adapting to different production needs and sizes.

Automated Line



Unfolding Robot



Packaging durability

Our Industrial packaging, thanks to its strong construction, can be made from lower grammage paper while maintaining the required durability parameters for transporting fruits and vegetables. This ensures that producers can be confident their products will reach customers in an undamaged condition.

We can use recycled paper in our packaging:

- Instead of using virgin (cellulose) fibers, we can completely eliminate this material due to the solid construction of the packaging.
- We can use recycled paper in combination with our hydrophobic barrier, allowing us to achieve greater strength while reducing the weight of the packaging or maintaining the same grammage of the liners.
- Packaging designed for fruits and vegetables may be exposed to air humidity levels of up to 90%. Thanks to the use of an **ecological hydrophobic barrier**, the packaging maintains its stability and durability in such conditions.



Difference in logistics

By choosing **Industrial** packaging, you can significantly reduce the number of required europallets and transports. Thanks to the ability to ship packaging in a “flat” form with a height of 7.5 mm, one europallet can hold up to 360 packages. As a result, only 42 pallets are needed for 15,000 packages, which translates into just 2 transports.

Assumptions	
Maximum pallet load height	1220×850 – 2m (2000 mm)
Standard trailer capacity	33 pallets
Package dimensions	600×400×150

Calculations	Industrial Crate	Traditional Crate
Dimensions	600×400×150 mm (shipped flat at 7.5mm thickness)	600×400×150 mm
Thickness when folded	7,5 mm	150 mm
Packages of pallets	360 pcs	56 pcs
Number of pallets for 15,000 packages	42 pallets	268 pallets
Numbers of transports	2	9

Summary	Industrial Crate
Reduction in the number of pallets	538 %
Reduction in the number of transports	350 %

By choosing **Industrial** packaging, you can significantly reduce the number of europallets and transports required, resulting in enormous logistics savings and a reduction in CO2 emissions.



Ecological aspects

- › Explanation of the Digi-Pack company's packaging philosophy
- › Reference to consumer research

Philosophy of Digi-Pack

Digi-Pack, the creator of the **Sustainable Pack** brand, has adopted an innovative philosophy of packaging production that combines sustainable development, the highest quality, and preparation for future market regulations. Our goal is to deliver products that not only meet the demands of the modern market but also contribute to environmental protection and sustainable development. Here are the key elements of our production philosophy:

01. Packaging Accessible to Everyone

We want our sustainable packaging to be accessible to the entire market, regardless of the size of the entity.

03. Innovation

- › **Design:** Our packaging is designed with functionality and aesthetics in mind. We invest in research and development to create packaging that is both practical and visually appealing.
- › **Patents:** We hold patented solutions that distinguish our products in the market and offer unique logistical and usage benefits.

05. Customer Focus

- › **Customization:** We offer the possibility to customize packaging according to individual client needs, both in terms of size and printing. We use water-based inks that are environmentally friendly and food-safe.
- › **Support and Education:** We support our customers at every stage of cooperation, offering advice and education on sustainable packaging practices.

02. Preparation for the PPWR Directive

We track and analyze future directives, such as PPWR (Packaging and Packaging Waste Regulation), which will soon impose significant responsibilities on many manufacturers. Our packaging is designed to meet the requirements of the directive by 2030, allowing our customers to stay ahead of the regulations

04. Quality

- › **Durability and Safety:** Our packaging is tested for durability and safety to ensure the best possible protection of the contents. As a result, our products are durable and resilient, exceeding market standards.
- › **Certifications:** We hold FSC® certification, which confirms the quality and ecological standards of our products.

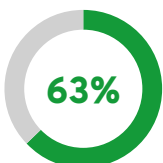
06. Community

- › **Social Engagement:** We actively engage in environmental protection and ecological education initiatives. We support local and global projects that promote sustainable development and ecological awareness.
- › **Collaboration:** We collaborate with various organizations and institutions to create better, more sustainable future solutions in packaging.

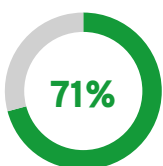
Consumer research

Changing Consumer Behavior

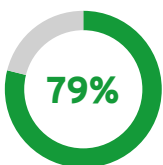
Consumers around the world are increasingly paying attention to the ecological aspects of the packaging of the products they buy. The 2023 Buying Green report indicates that:



63% of consumers state they are more likely to purchase products that avoid harmful packaging for the environment.



71% have chosen a product in the past six months based on its ecological packaging characteristics.



79% are actively seeking products in sustainable packaging.

Preferences of Younger Generations

Younger generations, such as Generation Z and Millennials, show particularly strong preferences for products in sustainable packaging, with **76-77% of respondents** in these groups choosing such products more often than the average consumer.

Economic Impact

Even in challenging economic conditions, such as inflation, consumers remain loyal to sustainable packaging. **82% of consumers** are willing to pay more for products in sustainable packaging, and 29% are willing to pay up to 10% more.

CompostTray™ by Sustainable Pack are innovative, compostable trays that perfectly align with the ecological expectations of modern consumers. These trays are fully compostable in home composting conditions, meaning that after use, they can be processed into valuable compost.

By choosing products like CompostTray™, consumers can be confident that they are not only caring for the freshness and safety of their purchases, but also contributing to environmental protection by minimizing waste and supporting sustainable development. With solutions like CompostTray™, Sustainable Pack responds to the growing demand for eco-friendly packaging while supporting consumers in their environmentally conscious choices.



Production Capabilities of Digi-Pack

- › Printing
- › Customization
- › Volumes



Printing

HQ FLEXO OFFSET 6+1 with Water-Based Inks

At Digi-Pack, we use the most advanced printing technologies, ensuring the highest quality and environmental sustainability



HQ FLEXO OFFSET 6+1 Technology

Our printing lines are equipped with advanced HQ FLEXO OFFSET machines, allowing printing in six colors plus one additional. This technology ensures exceptional precision and print quality.



Water-Based Inks

We exclusively use water-based inks that are environmentally friendly and safe for food. These inks minimize emissions of volatile organic compounds (VOC) and fully comply with ecological standards.



Packaging customization

Digi-Pack offers a wide range of packaging customization options tailored to the individual needs of our clients:



Packaging Customization

Each package can be customized in terms of size, shape, and design to meet the specific requirements of the client.

Ready Packaging Designs

Our design team is ready to create unique and attractive packaging designs that will stand out in the market.

We offer full support from concept to implementation, providing ready-to-go designs that can be immediately introduced into production.

Volumes

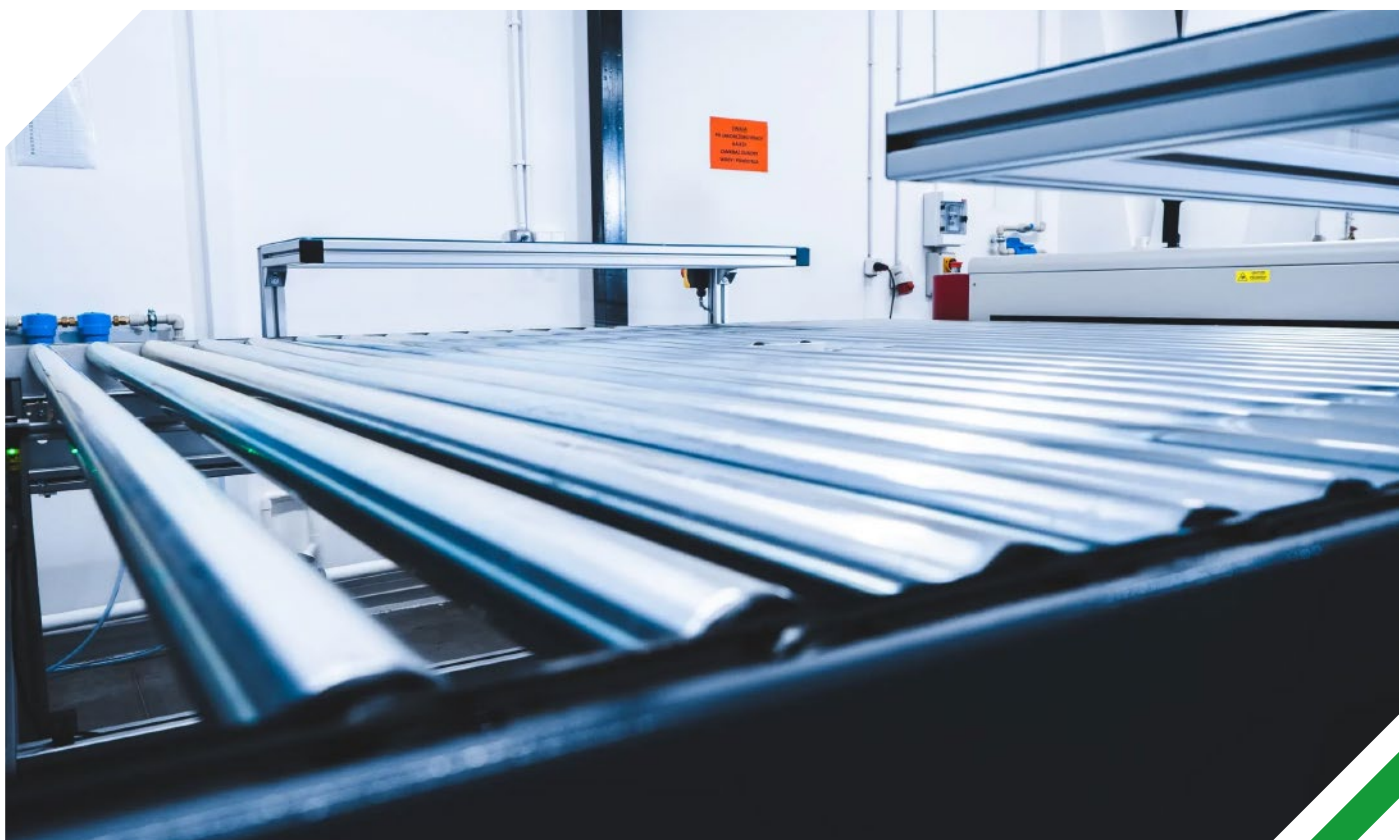
Possible production volumes per month

We have three key production locations – in Wielkopolska, Małopolska, and Kujawsko-Pomorskie – which are among the largest independent manufacturing plants in the industry. Thanks to our strategically located factories, we can ensure smooth and efficient production, even fulfilling the most demanding orders in a short time.

**5
min**

Up to 5 million packages per month

Thanks to advanced automation and the efficiency of our production lines, we are able to meet the high demands of our clients.



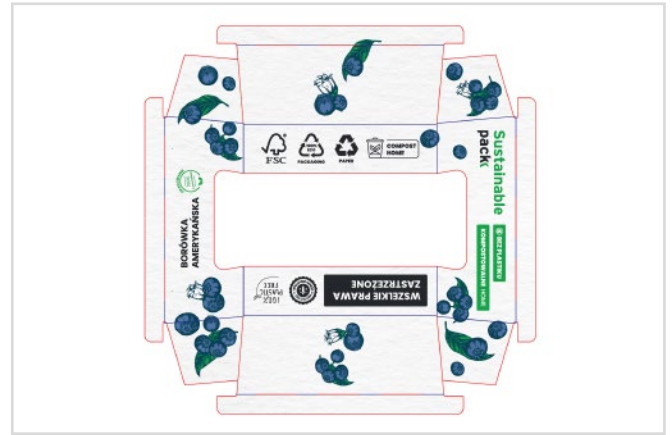
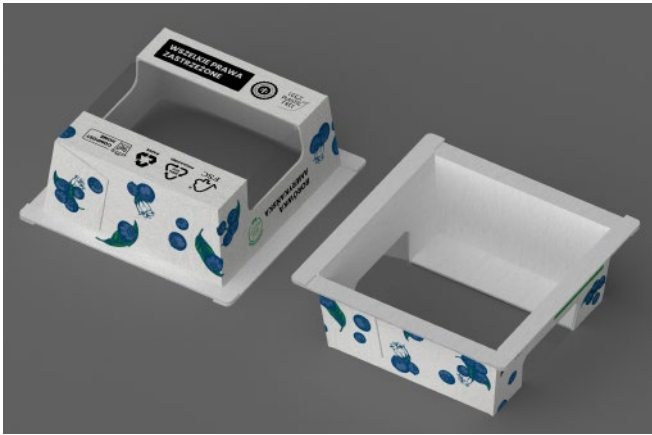


Packaging Designs

- › CompostTray™ 125g
- › CompostTray™ 250g
- › CompostTray™ 500g
- › RecyclingTray™ 125g
- › RecyclingTray™ 250g
- › RecyclingTray™ 500g

- › Crashlock Tray 125g
- › Crashlock Tray 250g
- › Crashlock Tray 500g
- › Industrial Box 300×200×100
- › Industrial Box 400×300×150
- › Industrial Box 600×400×100
- › Industrial Box 600×400×135
- › Industrial Box 600×400×150
- › Industrial Box 600×400×175
- › Industrial Box 600×400×220
- › Fruit Basket 1500 g

CompostTray™ Size 125g



The CompostTray™ 125g is an eco-friendly tray ideal for packaging small portions of fruits such as blueberries, raspberries, and other small fruits. Made entirely from compostable materials, it is perfect for home composting. The 125g tray ensures food safety, meeting the highest hygiene standards, and despite its lightweight construction, it is sturdy and durable, providing excellent fruit protection. Its modern design highlights its commitment to environmental protection, and after use, it can be composted safely, minimizing environmental impact.

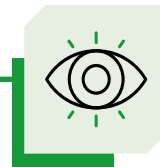
Key Benefits:



Fully compostable
(Home)



Option for eco-friendly
hydrophobic barrier



Designed with a focus
on **internal product
presentation**

Possible Uses:

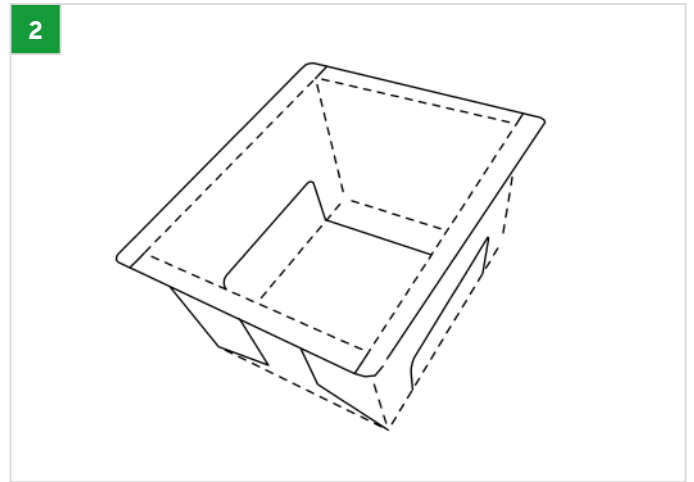
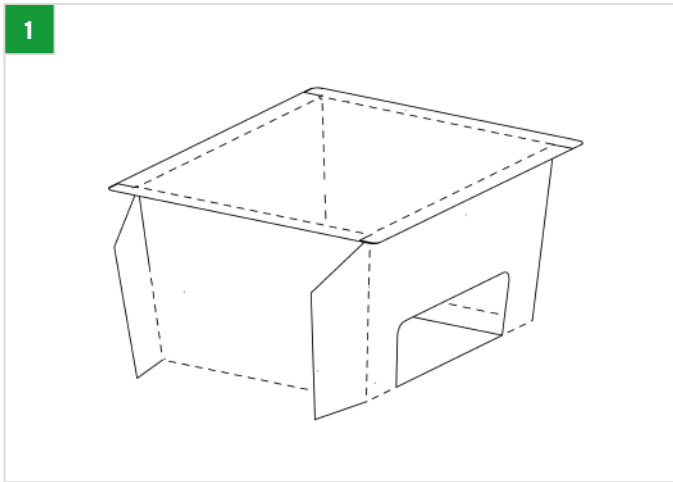
- ✔ Soft fruits: blueberries, raspberries, blackberries, and other similar-sized fruits



Features:

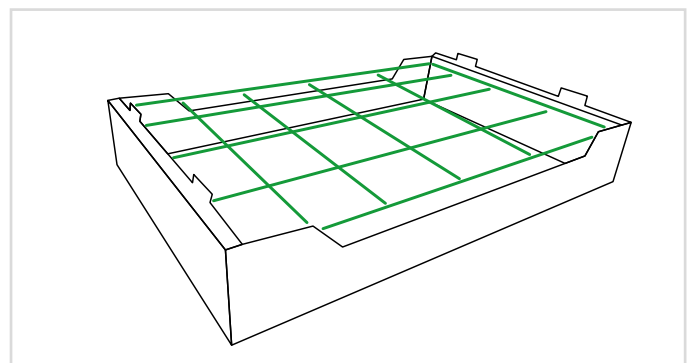
- Durable compostable film with micro-pores to release excess moisture.
- Option to use an eco-friendly hydrophobic barrier.
- Available with a solid or transparent bottom.
- Closure options include top seal or flow pack (made from compostable film).
- Made from solid or corrugated cardboard.
- Printed with water-based inks using digital, offset, or flexo printing.
- Delivered flat for easy self-assembly or pre-assembled.
- Can be folded by hand or with the help of an automated robot.

Folding mechanism:

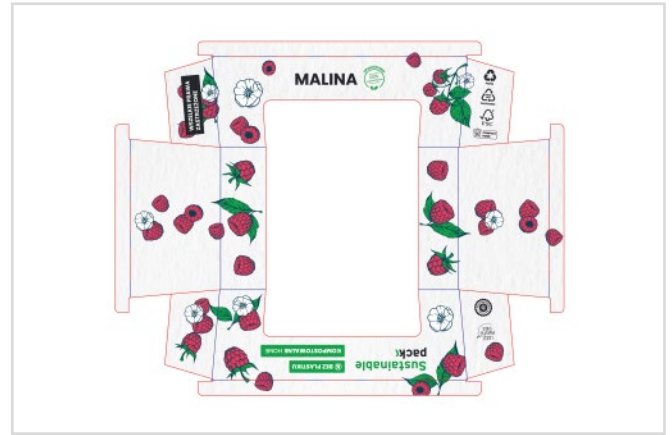
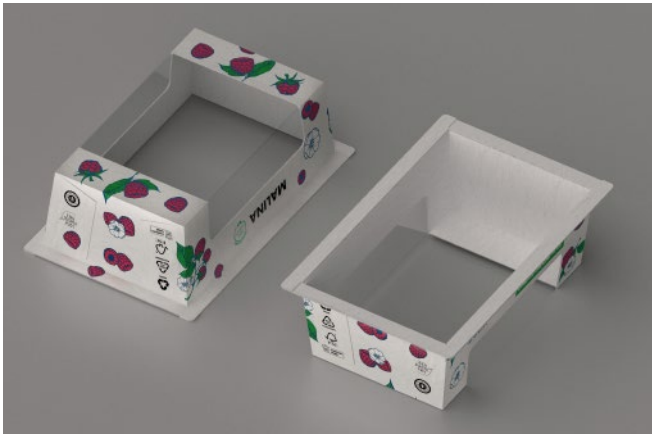


Logistical arrangement in industrial collecting carton 600x400x100:

Quantity	40 pcs.
----------	---------



CompostTray™ Size 250g



CompostTray™ Size 250g is an eco-friendly tray designed for packing medium-sized portions of fruit, such as blueberries, raspberries, blackberries, and other small fruits. Made entirely from compostable materials, it is ideal for home composting. With a capacity of 250g, the tray provides adequate protection and freshness for fruits, meeting the highest food safety standards. Despite its lightweight structure, it is solid and durable, ensuring excellent fruit protection. Its modern design emphasizes the commitment to environmental protection, and after use, it can be safely composted, minimizing environmental impact.

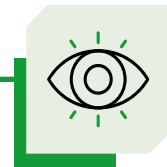
Key Benefits:



Fully compostable
(Home)



Option for eco-friendly
hydrophobic barrier



Designed to present
the **product inside**

Possible Uses:

✔ Soft fruits: blueberries, raspberries, blackberries, and other similar-sized fruits.

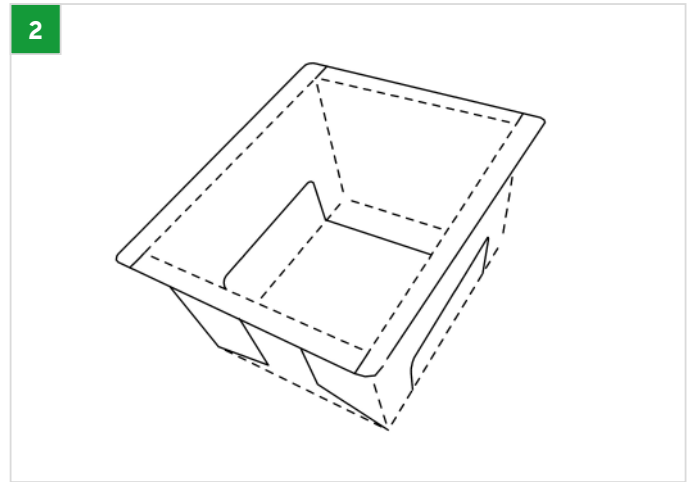
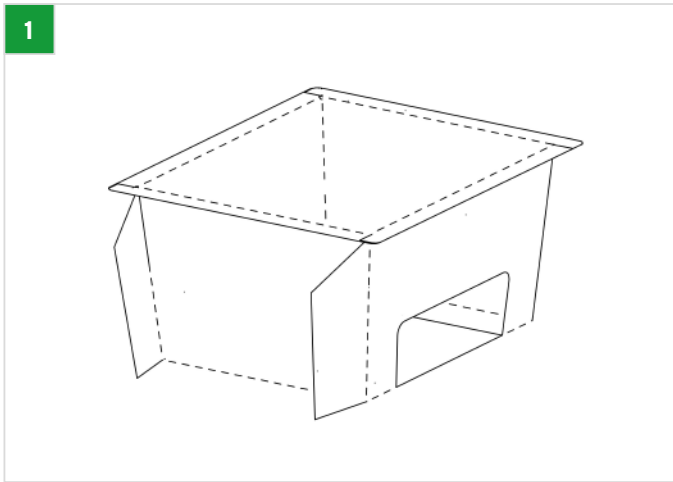
✔ Small vegetables: mushrooms, asparagus.



Features:

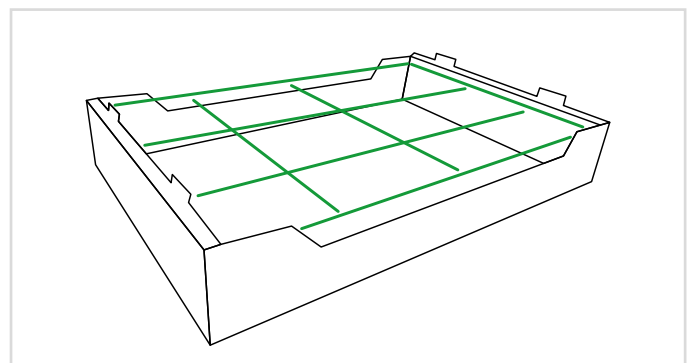
- Durable compostable film with micro-pores to release excess moisture.
- Option to use an eco-friendly hydrophobic barrier.
- Available with a solid or transparent bottom.
- Closure options include top seal or flow pack (made from compostable film).
- Made from solid or corrugated cardboard.
- Printed with water-based inks using digital, offset, or flexo printing.
- Delivered flat for easy self-assembly or pre-assembled.
- Can be folded by hand or with the help of an automated robot.

Folding mechanism:

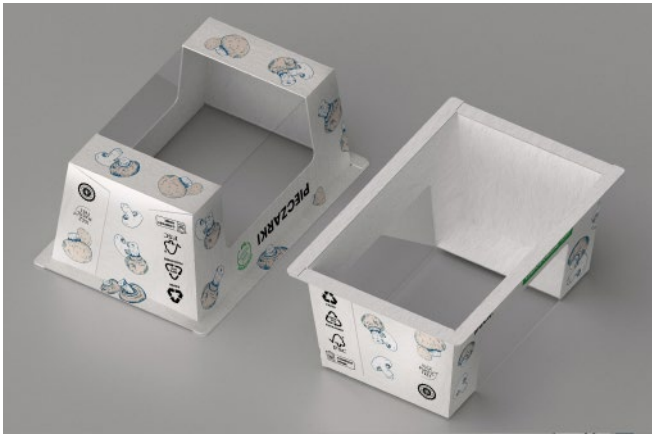


Logistical arrangement in industrial collecting carton 600x400x100:

Quantity	18 pcs.
----------	---------



CompostTray™ Size 500g



The 500g CompostTray™ is an eco-friendly tray specifically designed for packing larger portions of fruits, such as strawberries, raspberries, blueberries, and other small fruits. Made entirely from compostable materials, it is ideal for home composting. The 500g tray provides sufficient protection and freshness for fruits, meeting the highest food safety standards. Despite its lightweight construction, it is strong and durable, ensuring excellent fruit protection. Its modern design emphasizes commitment to environmental protection, and after use, it can be safely composted, minimizing environmental impact

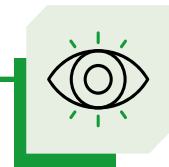
Key Benefits:



Fully compostable
(Home)



Option for eco-friendly
hydrophobic barrier



Designed for optimal
product presentation

Possible Uses:

✔ Soft fruits: blueberries, raspberries, strawberries, blackberries, and other similar-sized fruits.

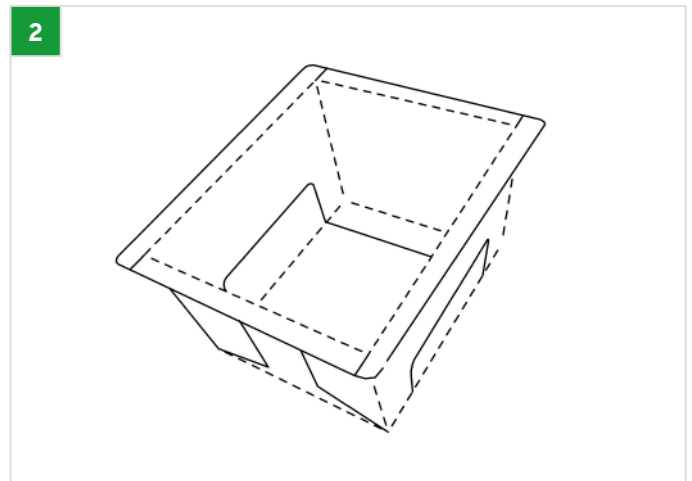
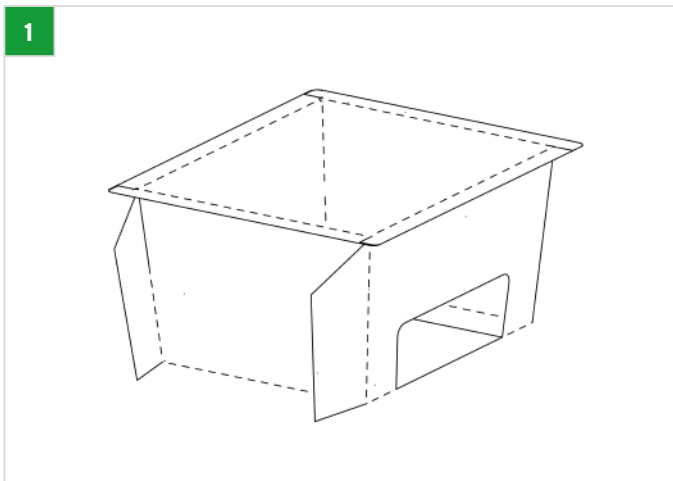
✔ Asparagus, strawberries, avocados, peaches.

✔ Mushrooms: mushrooms, button mushrooms, porcini mushrooms.

Features:

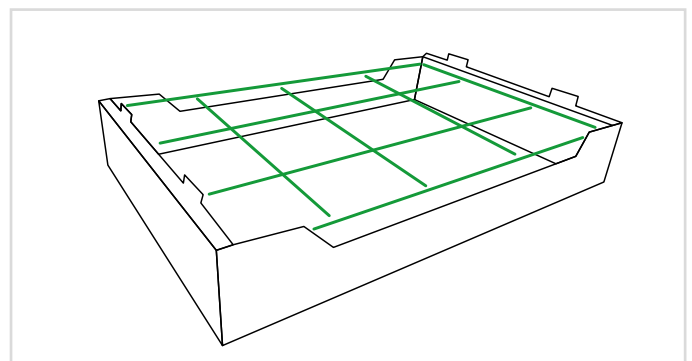
- Durable compostable film with micro-pores to release excess moisture.
- Option to use an eco-friendly hydrophobic barrier.
- Available with a solid or transparent bottom.
- Closure options include top seal or flow pack (made from compostable film).
- Made from solid or corrugated cardboard.
- Printed with water-based inks using digital, offset, or flexo printing.
- Delivered flat for easy self-assembly or pre-assembled.
- Can be folded by hand or with the help of an automated robot.

Folding mechanism:



Logistical arrangement in industrial collecting carton 600x400x100:

Quantity	12 pcs.
----------	---------



RecyklingTray™ Size 125g



RecyklingTray™ Size 125g is designed for packing small portions of fruits, such as blueberries, raspberries, blackberries, and other small fruits. Made from corrugated cardboard and 100% recycled material, this tray is both eco-friendly and durable. It is ideal for storage and transport, providing adequate protection and freshness for fruits. Its design allows for easy processing after use, supporting sustainable growth and waste reduction.

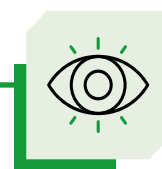
Key Benefits:



Made entirely from
recycled paper



Option to apply
an eco-friendly
hydrophobic barrier



Designed with product
presentation in mind

Possible Uses:

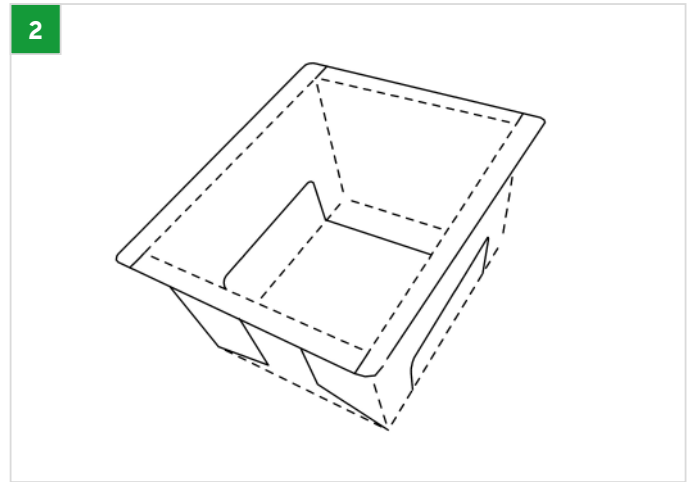
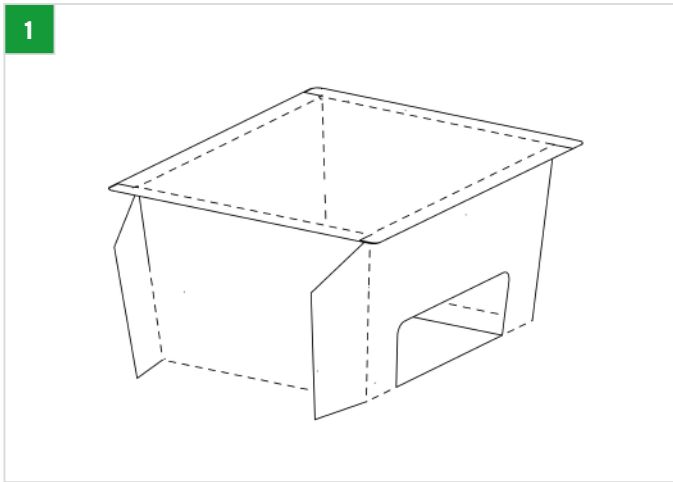
- ✔ Soft fruits: blueberries, raspberries, strawberries, blackberries, and other similar-sized fruits.



Features:

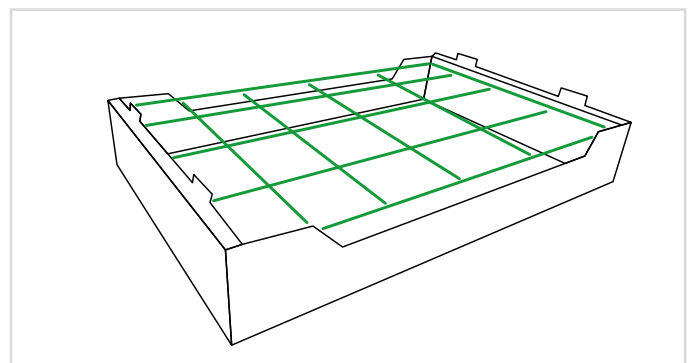
- Durable compostable film with micro-pores to release excess moisture.
- Option to use an eco-friendly hydrophobic barrier.
- Available with a solid or transparent bottom.
- Closure options include top seal or flow pack (made from compostable film).
- Made from solid or corrugated cardboard.
- Printed with water-based inks using digital, offset, or flexo printing.
- Delivered flat for easy self-assembly or pre-assembled.
- Can be folded by hand or with the help of an automated robot.

Folding mechanism:

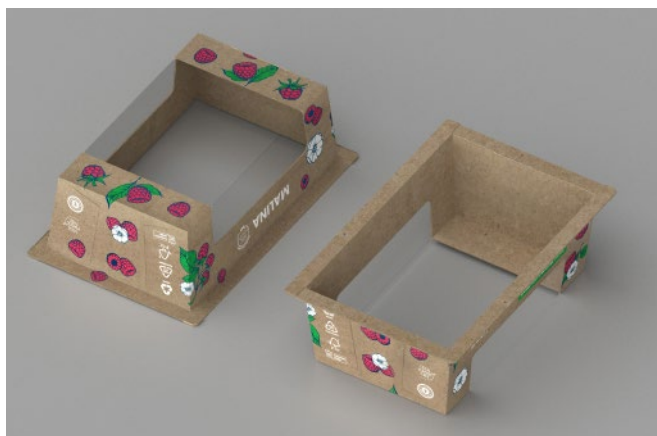


Logistical arrangement in industrial collecting carton 600x400x100:

Quantity	40 pcs.
----------	---------



RecyklingTray™ Size 250g



RecyklingTray™ Size 250g is designed for packing medium-sized portions of fruits like raspberries, strawberries, currants, and other small fruits. Made from corrugated cardboard, it is 100% recyclable, both eco-friendly and durable. It's ideal for storage and transport, providing optimal protection and freshness for the produce. Its design allows for easy recycling after use, supporting sustainable development and waste reduction.

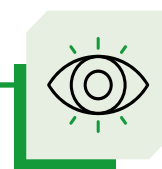
Key Benefits:



Made entirely from
recycled paper



Option to apply
an eco-friendly
hydrophobic barrier



Designed with a focus on
product display inside

Possible uses:

✔ Soft fruits: blueberries, raspberries, blackberries, strawberries, and others of similar size.

✔ Small mushrooms, such as button mushrooms

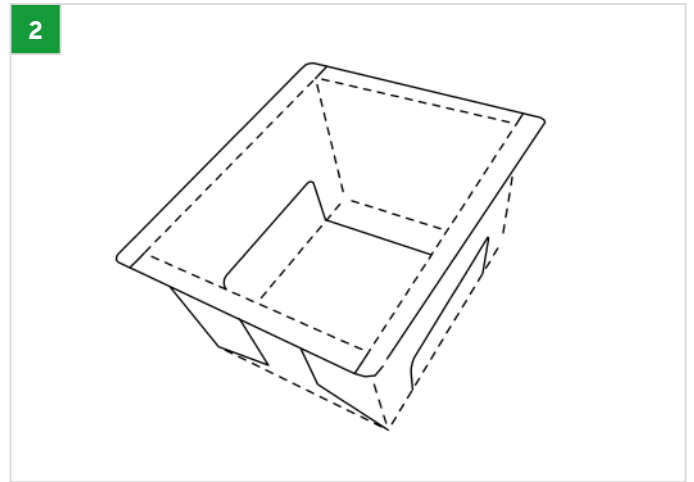
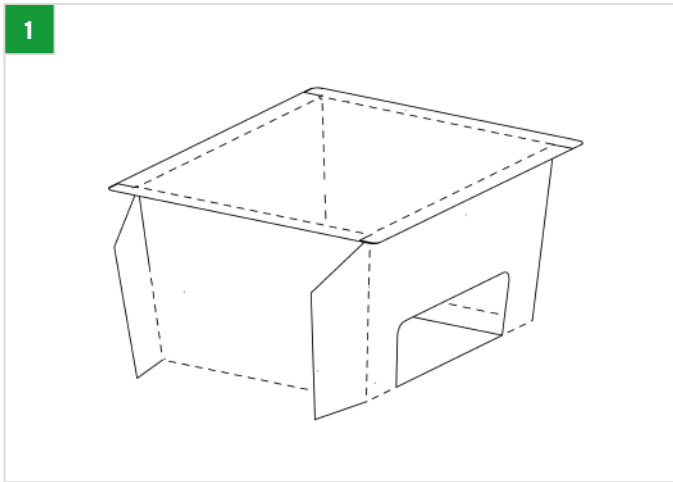
✔ Asparagus



Features:

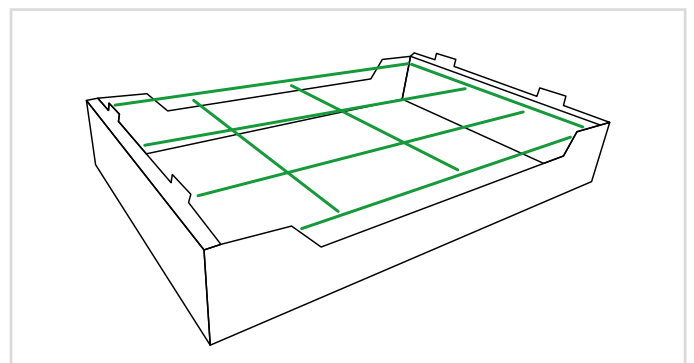
- Durable compostable film with micro-pores to release excess moisture.
- Option to use an eco-friendly hydrophobic barrier.
- Available with a solid or transparent bottom.
- Closure options include top seal or flow pack (made from compostable film).
- Made from solid or corrugated cardboard.
- Printed with water-based inks using digital, offset, or flexo printing.
- Delivered flat for easy self-assembly or pre-assembled.
- Can be folded by hand or with the help of an automated robot.

Folding mechanism:

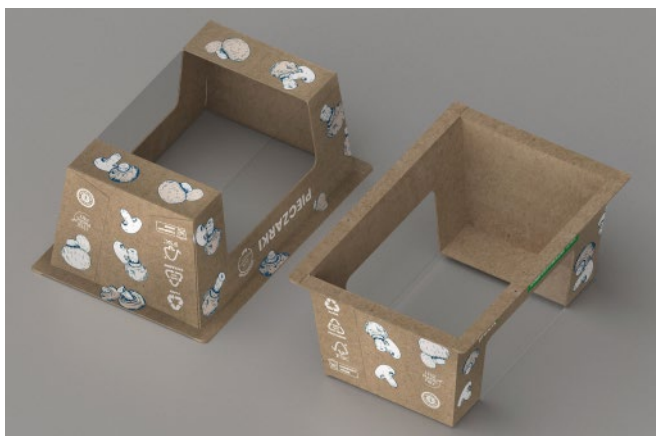


Logistical arrangement in industrial collecting carton 600x400x100:

Quantity	18 pcs.
----------	---------



RecyklingTray™ Size 500g



RecyklingTray™ Size 500g is a tray designed for packing larger portions of fruits like strawberries, raspberries, and other small fruits. Made from corrugated cardboard, 100% recycled, the tray is both eco-friendly and durable. It's ideal for storage and transport, ensuring proper protection and freshness of the fruits. The tray's design allows for easy recycling after use, supporting sustainable development and waste reduction.

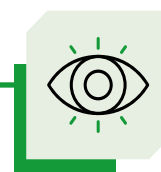
Key benefits:



Made entirely from
recycled paper



Option to apply
an eco-friendly
hydrophobic barrier



Designed with a focus on
product display inside

Possible uses:

✔ Soft fruits: blueberries, raspberries, blackberries, strawberries, and others of similar size

✔ Mushrooms: button mushrooms, shiitake

✔ Peaches

✔ Asparagus

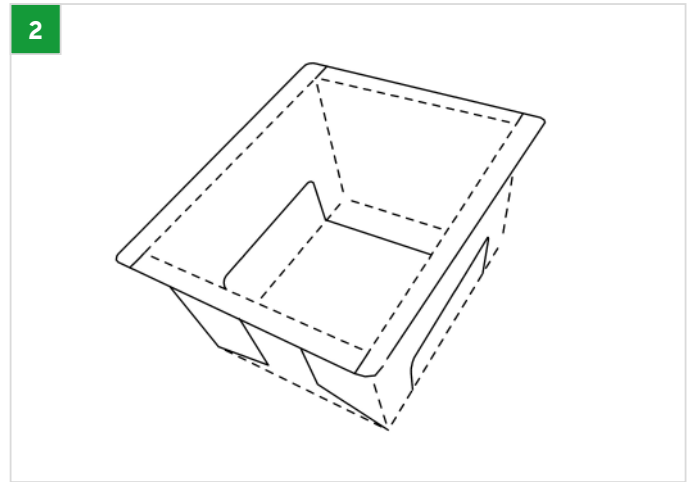
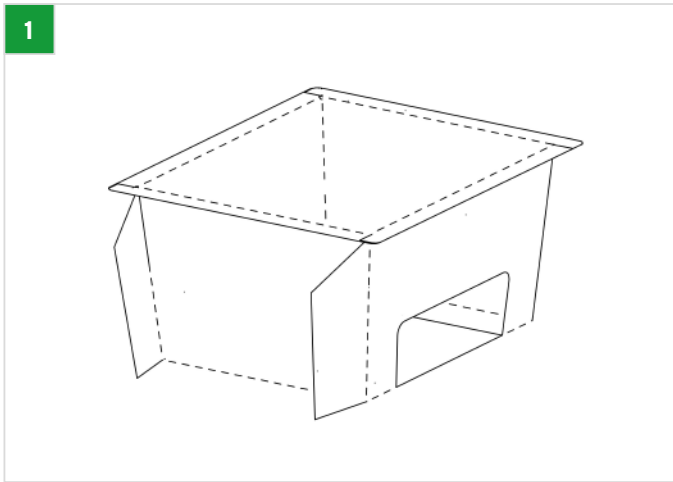
✔ Strawberries

✔ Avocados

Features:

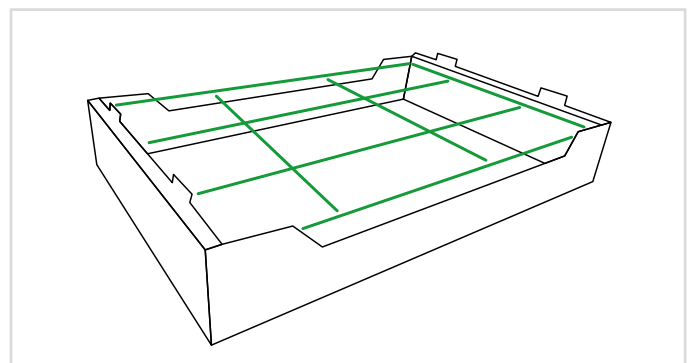
- Durable compostable film with micro-pores to release excess moisture.
- Option to use an eco-friendly hydrophobic barrier.
- Available with a solid or transparent bottom.
- Closure options include top seal or flow pack (made from compostable film).
- Made from solid or corrugated cardboard.
- Printed with water-based inks using digital, offset, or flexo printing.
- Delivered flat for easy self-assembly or pre-assembled.
- Can be folded by hand or with the help of an automated robot.

Folding mechanism:

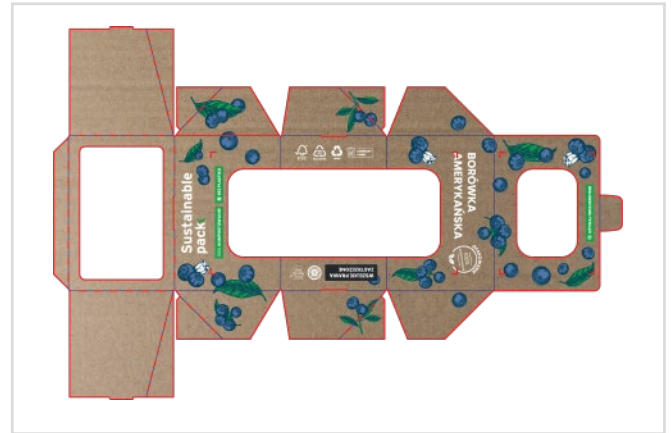


Logistical arrangement in industrial collecting carton 600x400x100:

Quantity	9 pcs.
----------	--------



Crashlock Tray 125g



The **Crashlock Tray with a capacity of 125g** is a practical and efficient packaging solution designed to simplify the packing process. Thanks to the use of an **automatic unfolding mechanism**, the tray opens instantly and stabilizes without the need for additional tools or glue. It is an ideal solution for companies focused on speed and efficiency.

The trays are shipped in a flat-folded form, reducing the space occupied in warehouses and during transport. This method of transport helps **reduce logistics costs and lowers CO2 emissions**, while also enabling the transport of a larger number of trays on a single pallet.

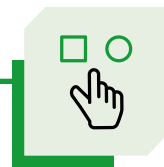
Key Benefits:



Automatic
unfolding



Delivered in a flat-folded form
Saves space, reduces costs, and is more environmentally friendly.



Available **with**
or **without closure**

Possible Uses:

✔ Small fruits, such as blueberries, raspberries, strawberries

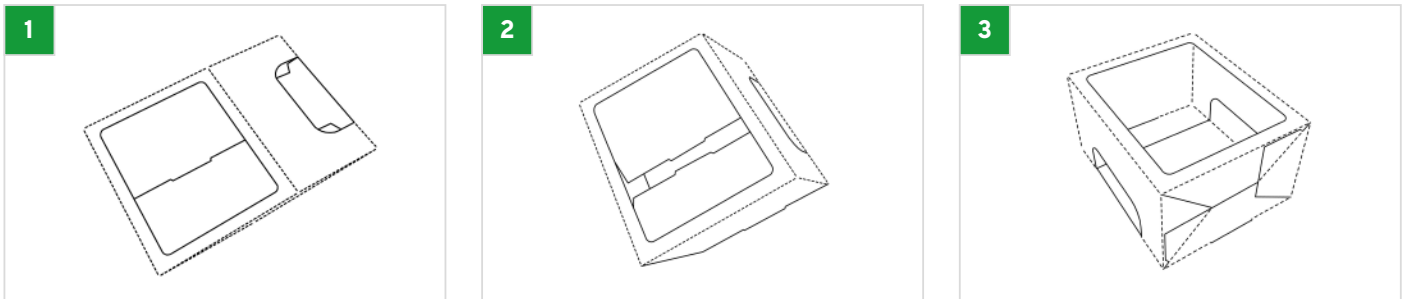
✔ Other small food products

✔ Small mushrooms (e.g., button mushrooms)

Features:

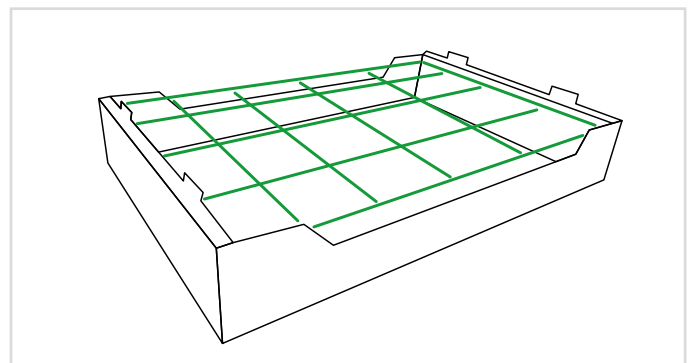
- Made from solid or corrugated E-flute cardboard, ensuring durability and structural stability.
- Option to apply an eco-friendly hydrophobic barrier coating.
- Automatic closure of the bottom without the use of glue.
- Durable compostable film with micro-pores that help release excess moisture.
- Compostable film with micro-pores that regulate excess moisture.
- Option to personalize the tray using eco-friendly water-based inks that are safe for the environment.
- Made from recycled materials, reducing the carbon footprint of the packaging.
- Trays are delivered flat-packed, increasing the number of units per pallet and reducing emissions during transport.

Folding mechanism:



Logistic arrangement on the pallet and in the collective box:

Quantity	40 pcs.
----------	---------



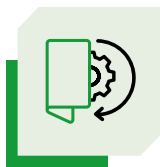
Crashlock Tray 250g



The **Crash Lock Tray with a capacity of 250g** ensures convenience and efficiency in the packing process. The **automatic unfolding mechanism** makes the tray open automatically, while the bottom stabilizes without the need for any tools or glue. The trays are transported flat, which reduces storage space and lowers transportation costs and CO2 emissions.

Trays transported in flat form help to significantly reduce occupied space in storage and during transport. This type of transport contributes to the **reduction of logistical costs** and the **reduction of CO2 emissions**, while simultaneously allowing more trays to be transported on a single pallet.

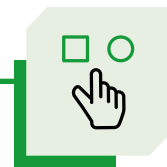
Key Benefits:



Automatic
unfolding



Delivered in a flat-folded form
Saves space, reduces costs, and is more environmentally friendly.



Available **with**
or **without closure**

Possible Uses:

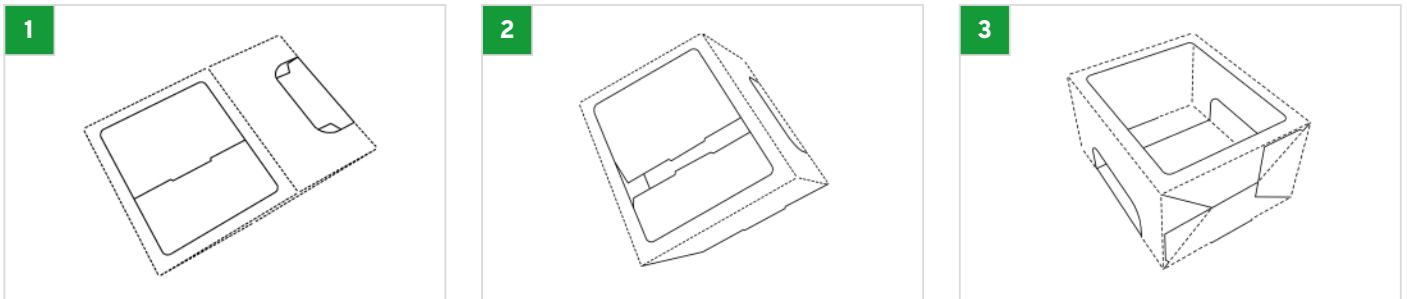
- ✔ Medium-sized fruits, such as raspberries, currants, strawberries
- ✔ Small mushrooms, e.g. champignons

- ✔ Medium-sized vegetables, such as asparagus

Features:

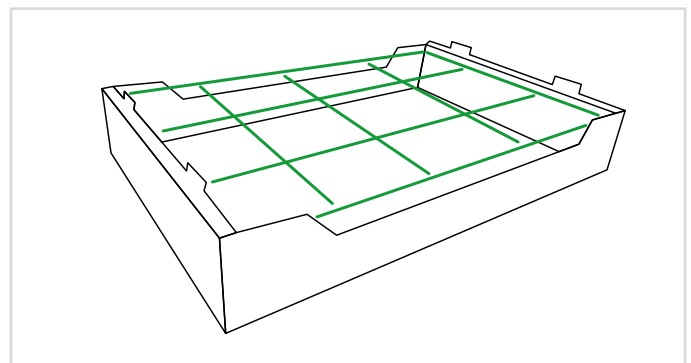
- Made from solid or corrugated E-flute cardboard, ensuring durability and structural stability.
- Option to apply an eco-friendly hydrophobic barrier coating.
- Automatic closure of the bottom without the use of glue.
- Durable compostable film with micro-pores that help release excess moisture.
- Compostable film with micro-pores that regulate excess moisture.
- Option to personalize the tray using eco-friendly water-based inks that are safe for the environment.
- Made from recycled materials, reducing the carbon footprint of the packaging.
- Trays are delivered flat-packed, increasing the number of units per pallet and reducing emissions during transport.

Folding mechanism:

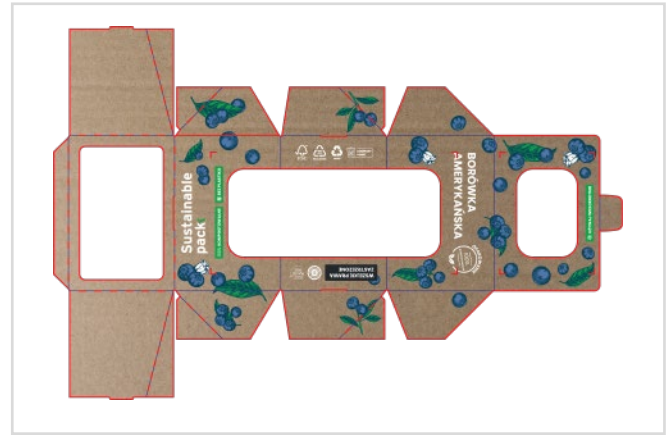


Logistic arrangement on the pallet and in the collective box:

Quantity	36 pcs.
-----------------	---------



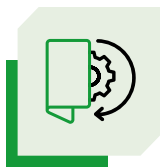
Crashlock Tray 500g



The **Crash Lock Tray with a capacity of 500g** is an ideal solution for companies that need larger packaging. The **automatic unfolding** mechanism ensures convenience and fast assembly without the use of tools. The trays are transported flat, which reduces logistical costs and allows more trays to fit on a single pallet, while also helping to reduce CO2 emissions.

Trays transported flat significantly reduce the space occupied in warehouses and during transport. This method of transport helps to **reduce logistical costs** and **decrease CO2 emissions**, while allowing more trays to be transported on one pallet.

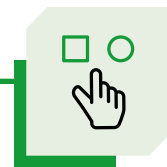
Key Benefits:



Automatic
unfolding



Delivered in a flat-folded form
Saves space, reduces costs, and is more environmentally friendly.



Available **with**
or **without closure**

Possible Uses:

✔ Larger fruits, such as strawberries, apples, peaches

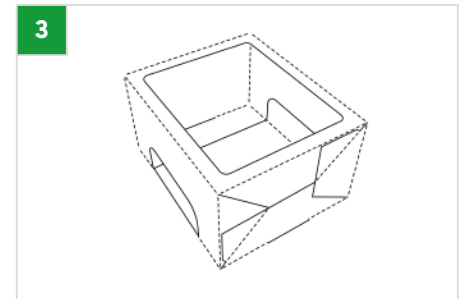
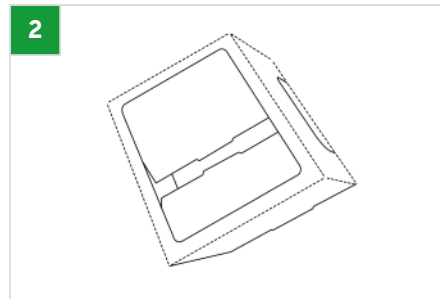
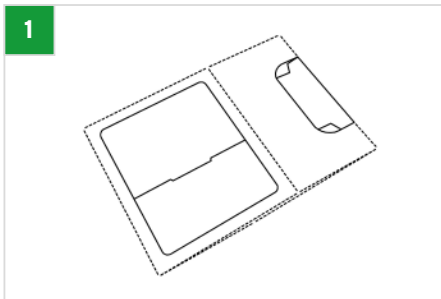
✔ Other larger food products.

✔ Larger vegetables, such as peppers, mushrooms

Features:

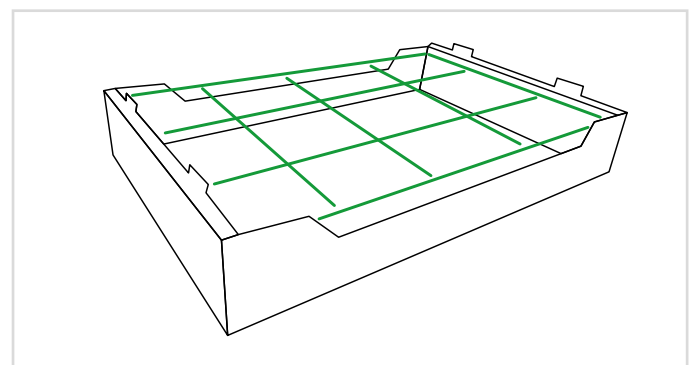
- Made from solid or corrugated E-flute cardboard, ensuring durability and structural stability.
- Option to apply an eco-friendly hydrophobic barrier coating.
- Automatic closure of the bottom without the use of glue.
- Durable compostable film with micro-pores that help release excess moisture.
- Compostable film with micro-pores that regulate excess moisture.
- Option to personalize the tray using eco-friendly water-based inks that are safe for the environment.
- Made from recycled materials, reducing the carbon footprint of the packaging.
- Trays are delivered flat-packed, increasing the number of units per pallet and reducing emissions during transport.

Folding mechanism:

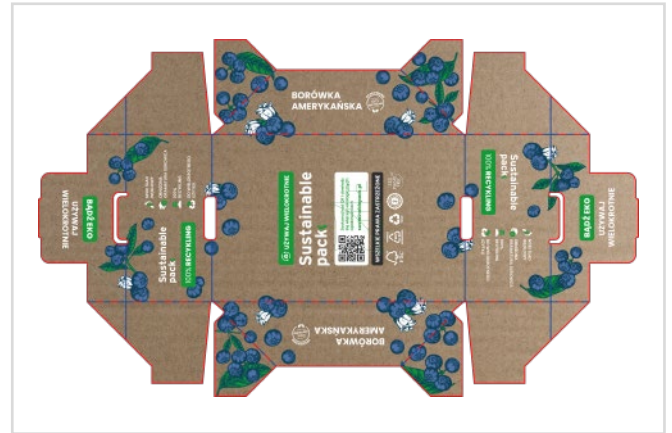


Logistic arrangement on the pallet and in the collective box:

Quantity	12 pcs.
----------	---------



Industrial Box 300x200x100 with full bottom



The **Industrial Box 300×200×100 mm** is a durable and eco-friendly solution designed specifically for packing and transporting smaller products, such as cherry tomatoes, bell peppers, and other fruits. Made from corrugated cardboard, 100% recycled, this compact box provides solid protection for its contents, minimizing the risk of damage during transport.

The 300×200×100 mm box is designed with maximum space efficiency in mind, both in storage and transport. The ability to fold the box flat allows for more boxes to fit on a single pallet, leading to a significant reduction in logistics costs and a smaller carbon footprint.

Additionally, the Industrial Box features an easy folding mechanism, allowing for quick and convenient preparation of boxes for use. It can be folded manually or using an optional robot, offering flexibility in production processes.

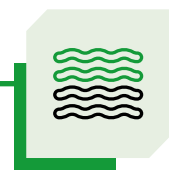
Key benefits:



Reduces carbon footprint
and CO2 emissions



Easy folding
mechanism



Made from
100% recycled
corrugated cardboard

Possible uses:

✔ Mushrooms

✔ Blueberries

✔ Plums

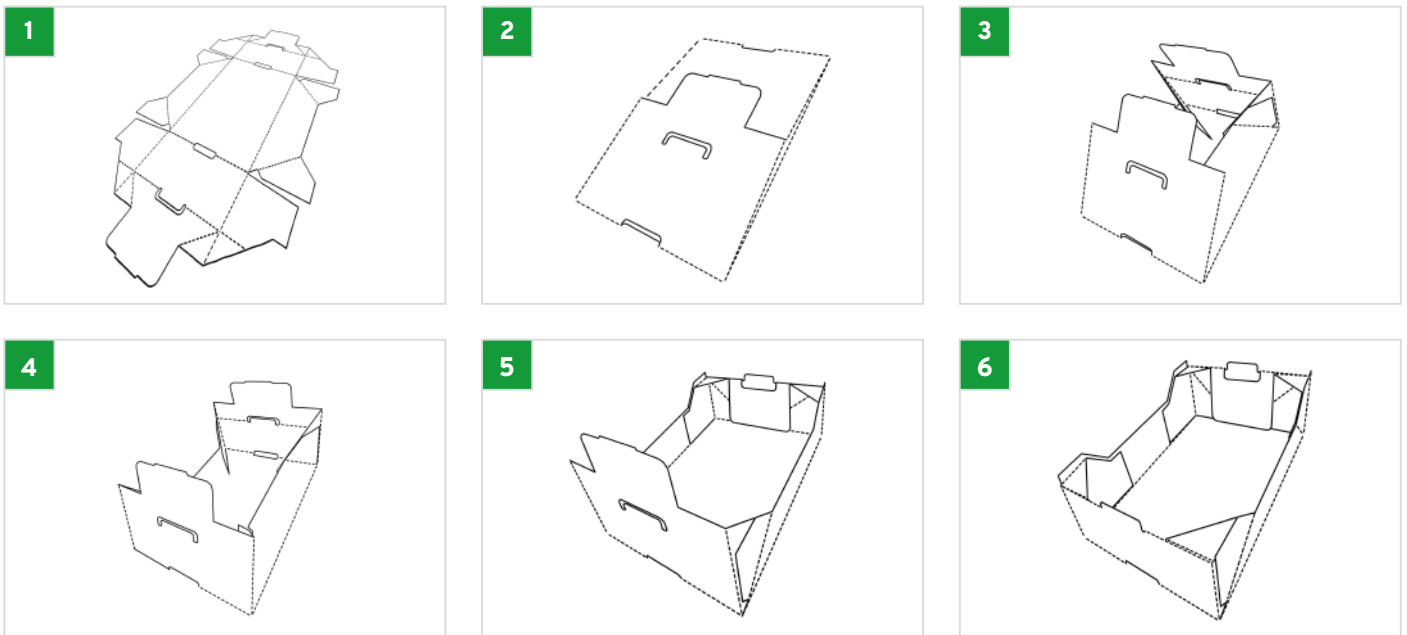
✔ Cherries



Features:

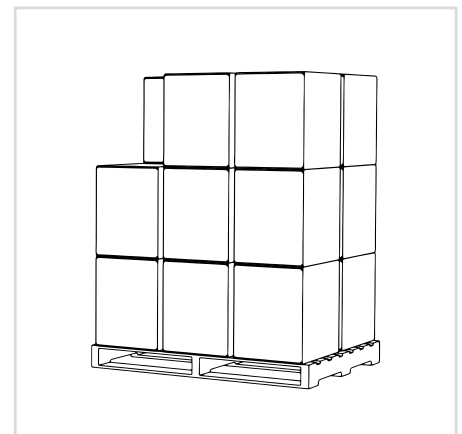
- Does not contain hot melt glue.
- Designed for multiple uses.
- Reduces CO2 emissions compared to traditional boxes.
- Occupies less space in the warehouse compared to traditional boxes.
- Made from corrugated cardboard.
- Printed with water-based inks using flexo technology.
- Delivered flat (unfolded) for self-assembly.
- Easy to fold with one hand or using an automated robot.

Folding Mechanism:



Arrangement on a pallet and in a collection box:

	1 pallet	33 pallets
Stacking pallet 125 cm	2400 pcs.	158400 pcs.
Pallet 180 cm	3680 pcs.	99360 pcs.
Pallet 200 cm	4000 pcs.	108000 pcs.



*The pallet quantities for Industrial were calculated based on program data and may vary from actual values.

Industrial Box 300x200x100 with holes for stacking



The **Industrial Box 300×200×100 mm** is a durable and eco-friendly solution designed specifically for packing and transporting smaller products, such as cherry tomatoes, bell peppers, and other fruits. Made from corrugated cardboard, 100% recycled, this compact box provides solid protection for its contents, minimizing the risk of damage during transport.

The 300×200×100 mm box is designed with maximum space efficiency in mind, both in storage and transport. The ability to fold the box flat allows for more boxes to fit on a single pallet, leading to a significant reduction in logistics costs and a smaller carbon footprint.

Additionally, the Industrial Box features an easy folding mechanism, allowing for quick and convenient preparation of boxes for use. It can be folded manually or using an optional robot, offering flexibility in production processes.

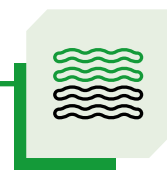
Key benefits:



Reduces carbon footprint
and CO2 emissions



Easy folding
mechanism



Made from
100% recycled
corrugated cardboard

Possible uses:

✔ Mushrooms

✔ Blueberries

✔ Plums

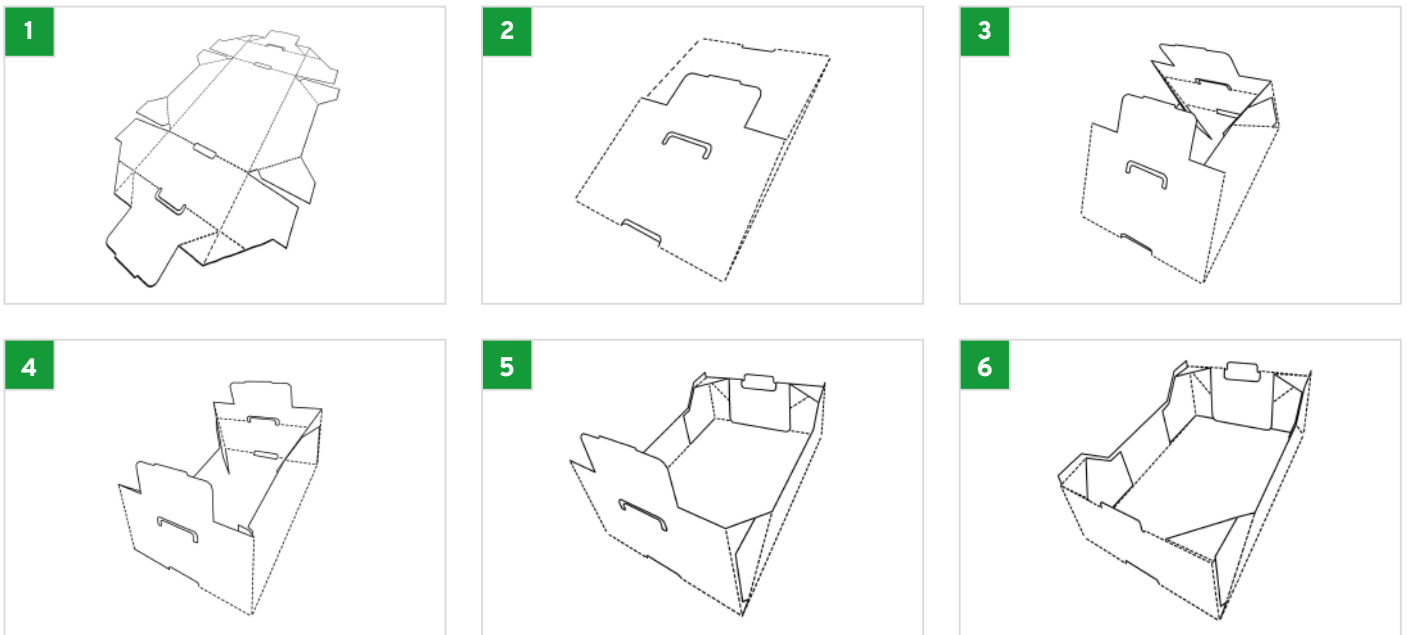
✔ Cherries



Features:

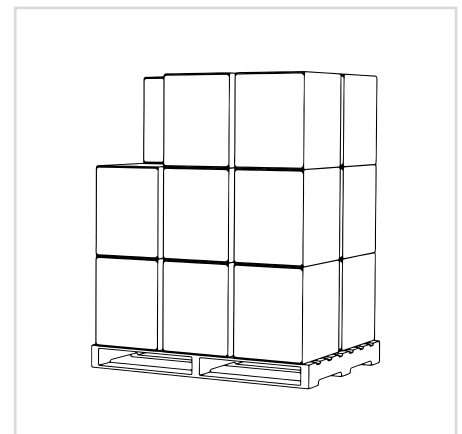
- Does not contain hot melt glue.
- Designed for multiple uses.
- Reduces CO2 emissions compared to traditional boxes.
- Occupies less space in the warehouse compared to traditional boxes.
- Made from corrugated cardboard.
- Printed with water-based inks using flexo technology.
- Delivered flat (unfolded) for self-assembly.
- Easy to fold with one hand or using an automated robot.

Folding mechanism:



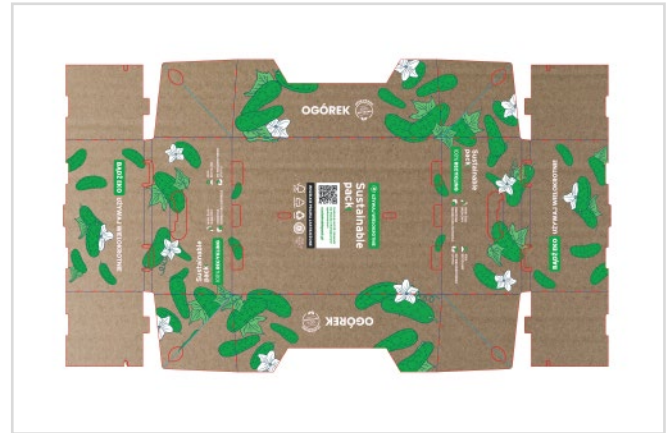
Arrangement on a pallet and in a collection box:

	1 pallet	33 pallets
Stacking pallet 125 cm	2400 pcs.	158400 pcs.
Pallet 180 cm	3680 pcs.	99360 pcs.
Pallet 200 cm	4000 pcs.	108000 pcs.



*The pallet quantities for Industrial were calculated based on program data and may vary from actual values.

Industrial Box 400x300x150



The **Industrial Box 400×300×150 mm** is a solid and eco-friendly solution specifically designed for the packaging and transportation of fresh products, such as tomatoes and cucumbers. Made from corrugated cardboard, 100% recycled, the box is durable and sturdy, providing excellent protection for its contents.

The box, with dimensions of 400×300×150 mm, has been designed to optimize warehouse space and transport. The ability to fold the box flat significantly increases the number of packages that can be placed on a single pallet, reducing logistics costs and lowering CO2 emissions.

Additionally, the Industrial box is equipped with an innovative folding mechanism, which allows for quick and efficient preparation of the boxes for use. It can be folded manually or with the help of an optional folding robot, increasing flexibility and production efficiency.

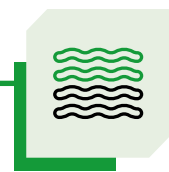
Key Benefits:



Reduces carbon footprint
and CO2 emissions



Easy folding
mechanism



Made from
100% recycled
corrugated cardboard

Possible Applications:

✓ Cucumbers

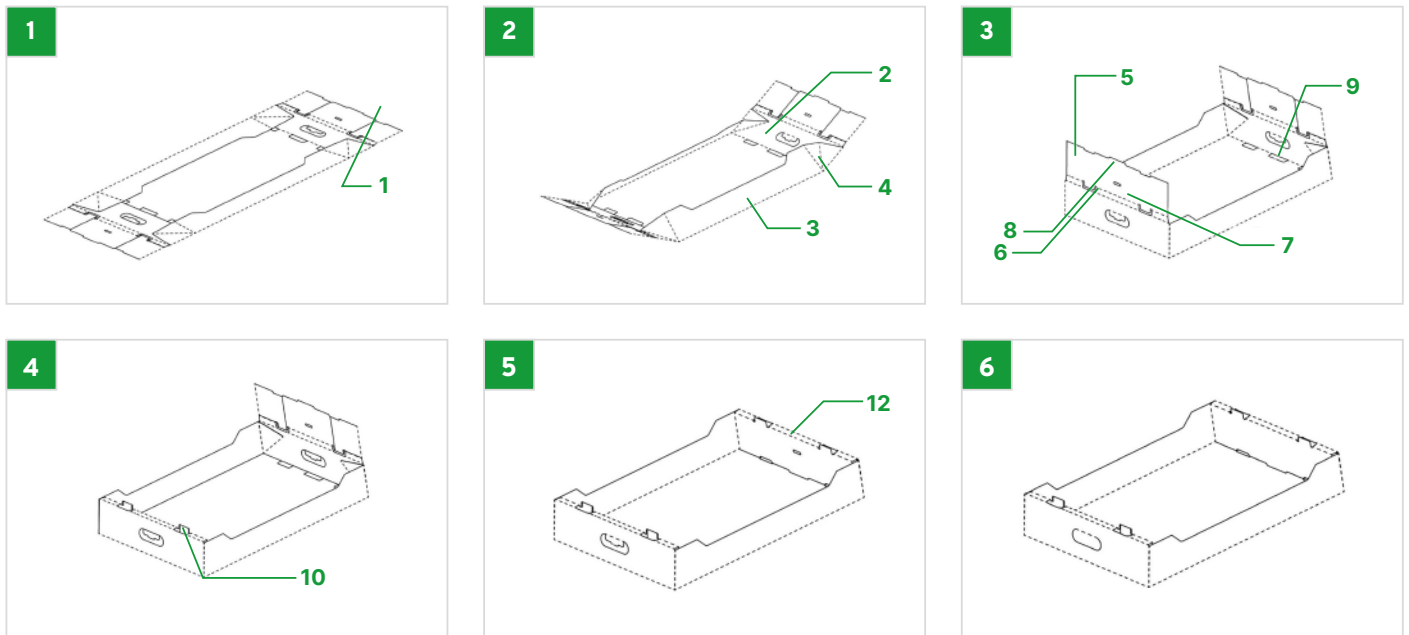
✓ Tomatoes



Features:

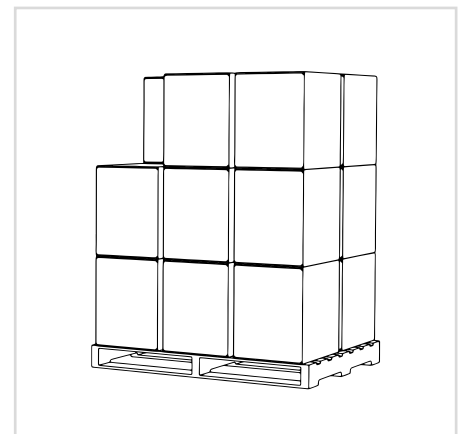
- › Does not contain hot melt glue.
- › Designed for multiple uses.
- › Reduces CO2 emissions compared to traditional boxes.
- › Occupies less space in the warehouse compared to traditional boxes.
- › Made from corrugated cardboard.
- › Printed with water-based inks using flexo technology.
- › Delivered flat (unfolded) for self-assembly.
- › Easy to fold with one hand or using an automated robot.

Folding mechanism:



Arrangement on a pallet and in a collection box:

	1 pallet	33 pallets
Stacking pallet 125 cm	140 pcs.	9240 pcs.
Pallet 180 cm	196 pcs.	6480 pcs.
Pallet 200 cm	240 pcs.	7920 pcs.



*The pallet quantities for Industrial were calculated based on program data and may vary from actual values.

Industrial Box 600x400x100



The Industrial Box 600×400×100 mm is a solid and eco-friendly solution designed specifically for packaging and transporting fresh products such as strawberries, pears, tomatoes, apples, citrus fruits, and other similar-sized items. Made from corrugated cardboard, 100% recycled, this box is strong and durable, providing excellent protection for its contents.

The box, with dimensions of 600×400×100 mm, is designed with optimal warehouse space and transportation efficiency in mind. The ability to fold the box flat significantly increases the number of packages that can be placed on a single pallet, reducing logistics costs and lowering CO2 emissions.

Additionally, the Industrial box is equipped with an innovative folding mechanism that allows for quick and efficient preparation of the boxes for use. It can be folded manually or with the help of an optional folding robot, increasing flexibility and production efficiency.

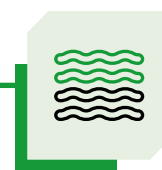
Key Benefits:



Reduces carbon footprint
and CO2 emissions



Easy folding
mechanism



Made from
100% recycled
corrugated cardboard

Possible Applications:

✓ Cucumbers

✓ Strawberries

✓ Apples

✓ Tomatoes

✓ Pears

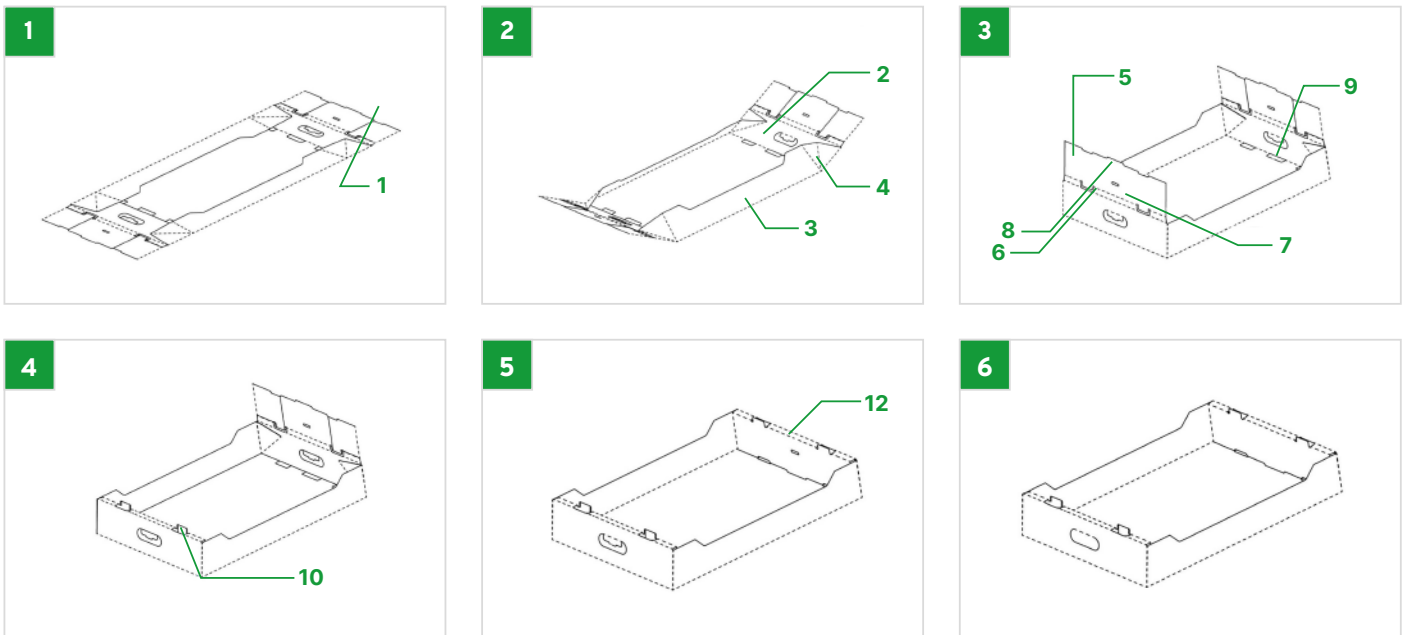
✓ Citrus fruits



Features:

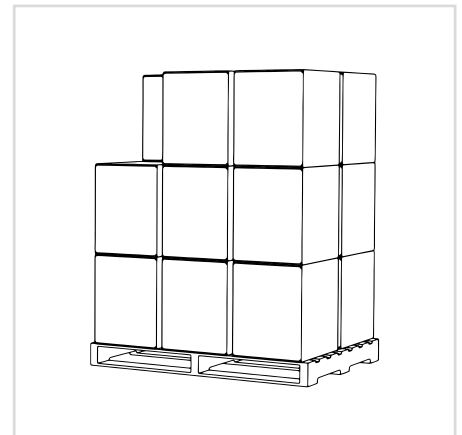
- Does not contain hot melt glue.
- Designed for multiple uses.
- Reduces CO2 emissions compared to traditional boxes.
- Occupies less space in the warehouse compared to traditional boxes.
- Made from corrugated cardboard.
- Printed with water-based inks using flexo technology.
- Delivered flat (unfolded) for self-assembly.
- Easy to fold with one hand or using an automated robot.

Folding mechanism:



Arrangement on a pallet and in a collection box:

	1 pallet	33 pallets
Stacking pallet 125 cm	140 pcs.	9240 pcs.
Pallet 180 cm	196 pcs.	6480 pcs.
Pallet 200 cm	240 pcs.	7560 pcs.



*The pallet quantities for Industrial were calculated based on program data and may vary from actual values.

Industrial Box 600x400x135



The Industrial Box 600×400×135 mm is a solid and eco-friendly packaging solution designed for the transportation of medium and large products such as fruits, vegetables, and food items. Made from corrugated cardboard, 100% recycled, the box is durable and offers excellent protection for the transported products while also caring for the environment by reducing CO2 emissions.

The box, with dimensions of 600×400×135 mm, is designed with maximum space optimization in mind, both for warehouse storage and transportation. The ability to fold the box flat allows for the placement of more boxes on a single pallet, leading to lower transport costs and a reduced carbon footprint.

Thanks to the innovative folding mechanism, the Industrial Box can be quickly and efficiently prepared for use, increasing production efficiency. It can be folded manually or with the help of an optional robot, adapting to various production needs.

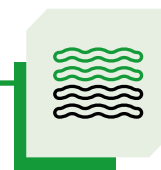
Key Benefits:



Reduces carbon footprint
and CO2 emissions



Easy folding
mechanism



Made from
100% recycled
corrugated cardboard

Possible Applications:

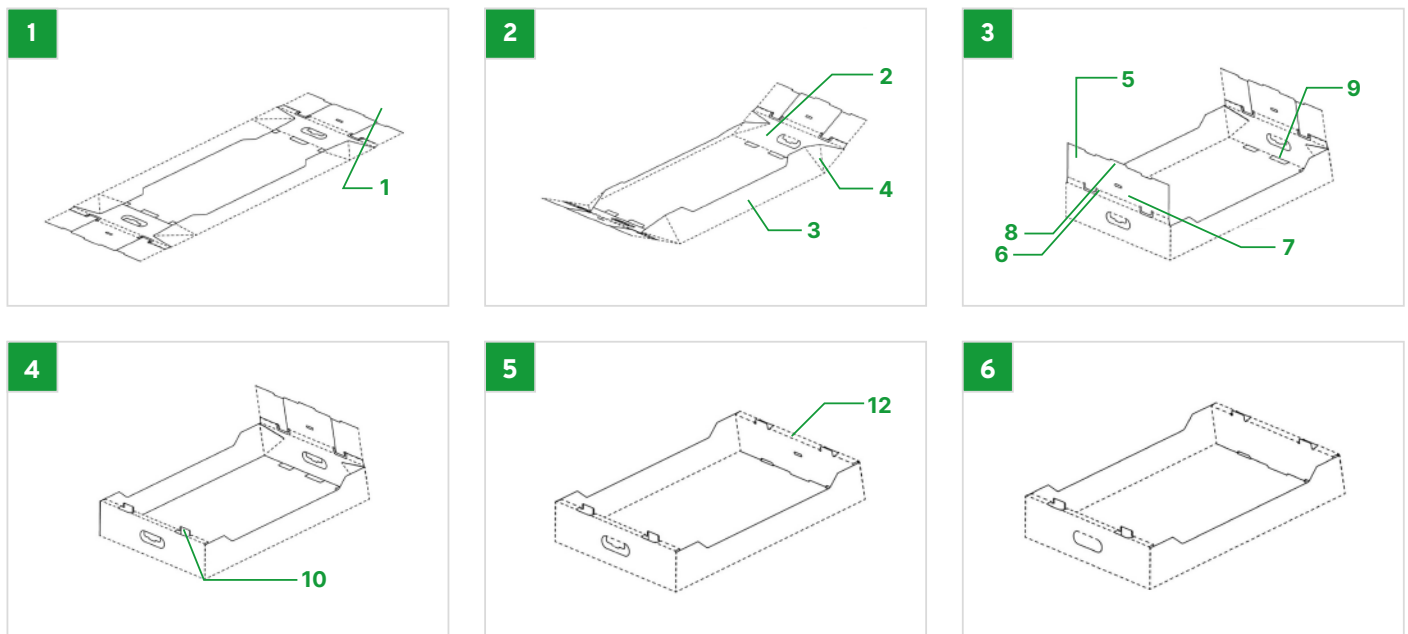
 Plums



Features:

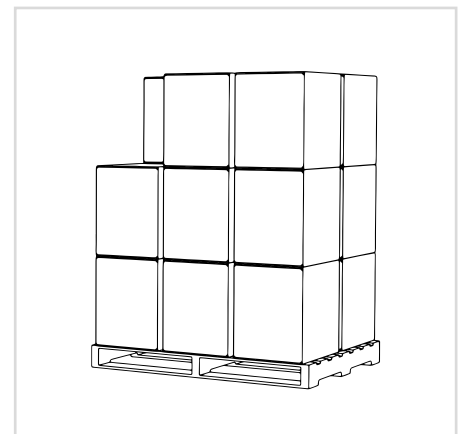
- › Does not contain hot melt glue.
- › Designed for multiple uses.
- › Reduces CO2 emissions compared to traditional boxes.
- › Occupies less space in the warehouse compared to traditional boxes.
- › Made from corrugated cardboard.
- › Printed with water-based inks using flexo technology.
- › Delivered flat (unfolded) for self-assembly.
- › Easy to fold with one hand or using an automated robot.

Folding mechanism:



Arrangement on a pallet and in a collection box:

	1 pallet	33 pallets
Stacking pallet 125 cm	210 pcs.	7560 pcs.
Pallet 180 cm	240 pcs.	7920 pcs.
Pallet 200 cm	360 pcs.	6480 pcs.



*The pallet quantities for Industrial were calculated based on program data and may vary from actual values.

Industrial Box 600x400x150



The Industrial Box 600×400×150 mm is a solid and eco-friendly solution designed specifically for packing and transporting fresh products like tomatoes and cucumbers. Made from corrugated cardboard, 100% recycled, the box is durable and sturdy, providing excellent protection for its contents.

The box, with dimensions of 600×400×150 mm, is designed with optimal warehouse and transport space in mind. The ability to fold the box flat significantly increases the number of boxes per pallet, reducing logistics costs and CO2 emissions.

Additionally, the Industrial Box is equipped with an innovative folding mechanism, allowing quick and efficient preparation of the packaging for use. It can be folded manually or with the help of an optional robot, offering flexibility and efficiency in the production process.

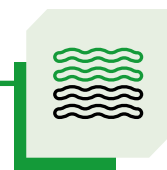
Key Benefits:



Reduces carbon footprint
and CO2 emissions



Easy folding
mechanism



Made from
100% recycled
corrugated cardboard

Possible Applications:

✓ Cucumbers

✓ Peppers

✓ Carrots

✓ Citrus fruits

✓ Tomatoes

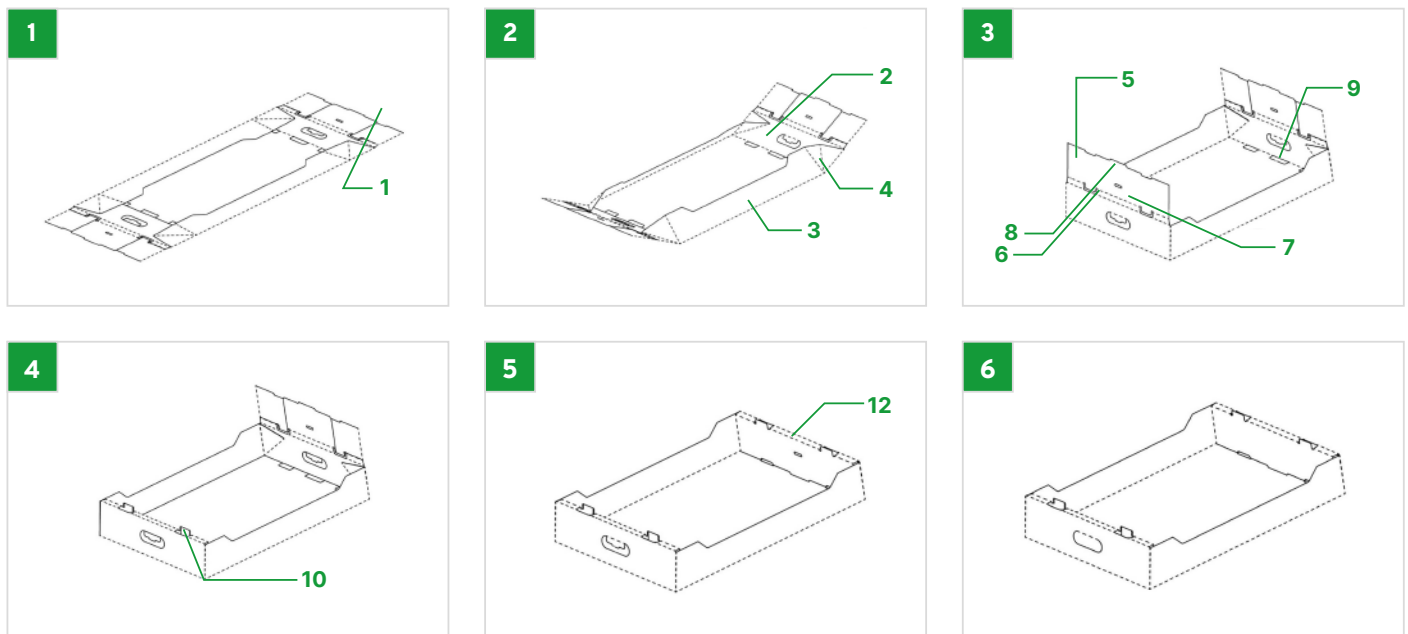
✓ Zucchini

✓ Apples

Features:

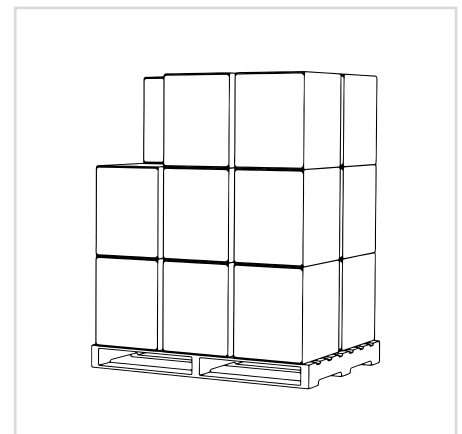
- › Does not contain hot melt glue.
- › Designed for multiple uses.
- › Reduces CO2 emissions compared to traditional boxes.
- › Occupies less space in the warehouse compared to traditional boxes.
- › Made from corrugated cardboard.
- › Printed with water-based inks using flexo technology.
- › Delivered flat (unfolded) for self-assembly.
- › Easy to fold with one hand or using an automated robot.

Folding mechanism:



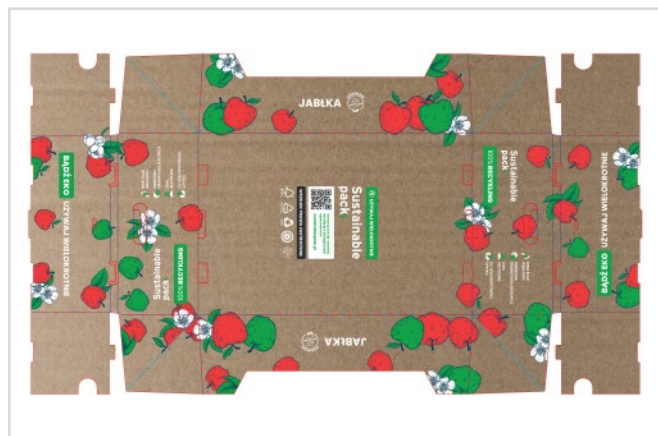
Arrangement on a pallet and in a collection box:

	1 pallet	33 pallets
Stacking pallet 125 cm	210 pcs.	7560 pcs.
Pallet 180 cm	240 pcs.	6480 pcs.
Pallet 200 cm	360 pcs.	6480 pcs.



*The pallet quantities for Industrial were calculated based on program data and may vary from actual values.

Industrial Box 600x400x175



The Industrial Box 600×400×175 mm is a solid and eco-friendly solution designed specifically for packing and transporting fresh products like apples, carrots, cauliflower, peppers, and similar-sized items. Made from corrugated cardboard, 100% recycled, the box is durable and strong, providing excellent protection for its contents.

The box, with dimensions of 600×400×175 mm, is designed with optimal warehouse and transport space in mind. The ability to fold the box flat significantly increases the number of boxes per pallet, reducing logistics costs and CO2 emissions.

Additionally, the Industrial Box is equipped with an innovative folding mechanism, allowing quick and efficient preparation of the packaging for use. It can be folded manually or with the help of an optional folding robot, enhancing flexibility and production efficiency.

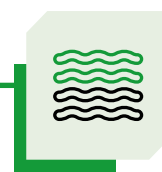
Key Benefits:



Reduces carbon footprint
and CO2 emissions



Easy folding
mechanism



Made from
100% recycled
corrugated cardboard

Possible Applications:

✓ Cucumbers

✓ Apples

✓ Cauliflower

✓ Pears

✓ Tomatoes

✓ Carrots

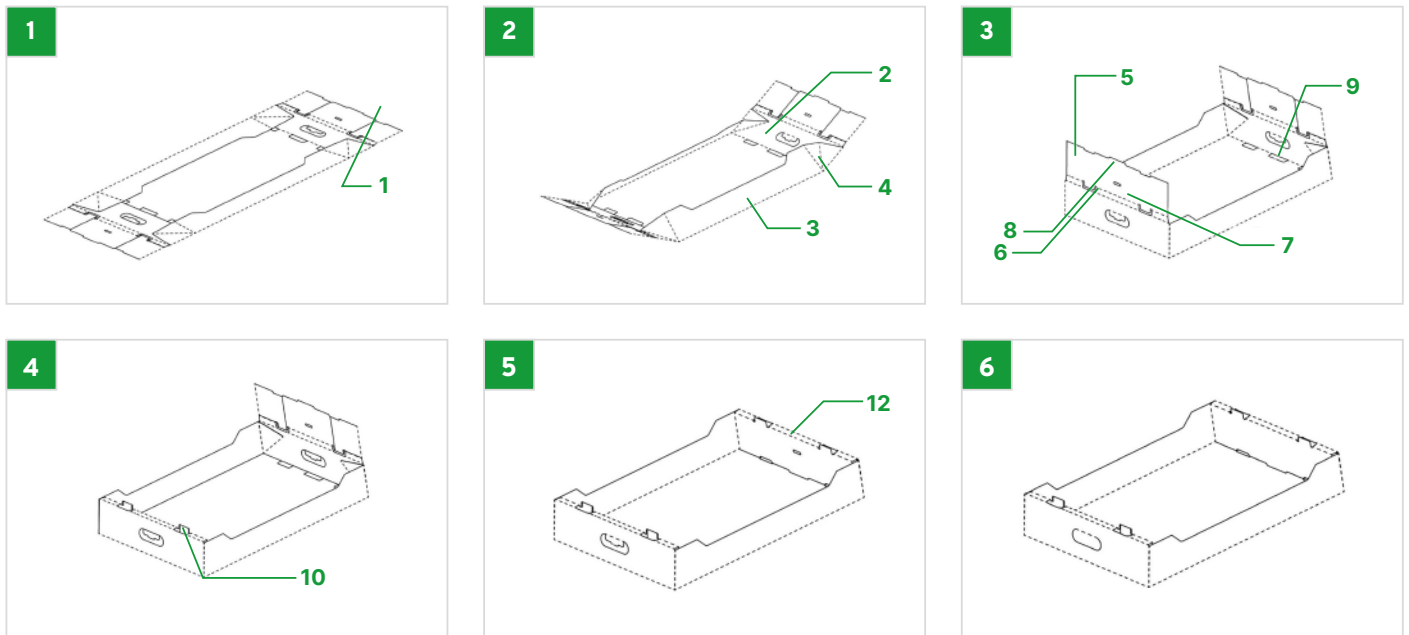
✓ Peppers

✓ Citrus fruits

Features:

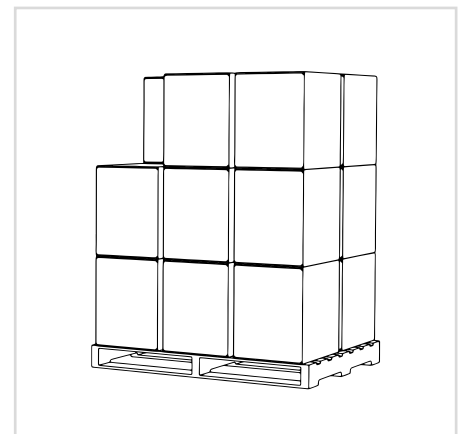
- › Does not contain hot melt glue.
- › Designed for multiple uses.
- › Reduces CO2 emissions compared to traditional boxes.
- › Occupies less space in the warehouse compared to traditional boxes.
- › Made from corrugated cardboard.
- › Printed with water-based inks using flexo technology.
- › Delivered flat (unfolded) for self-assembly.
- › Easy to fold with one hand or using an automated robot.

Folding mechanism:



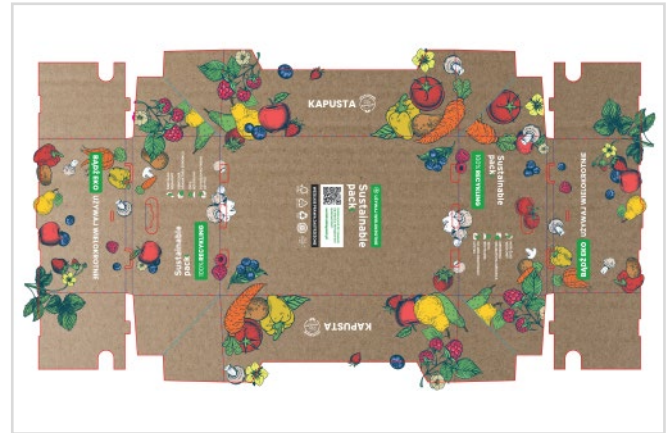
Arrangement on a pallet and in a collection box:

	1 pallet	33 pallets
Stacking pallet 125 cm	210 pcs.	7560 pcs.
Pallet 180 cm	160 pcs.	5280 pcs.
Pallet 200 cm	360 pcs.	6480 pcs.



*The pallet quantities for Industrial were calculated based on program data and may vary from actual values.

Industrial Box 600x400x220



The Industrial Box 600×400×220 mm is a solid and eco-friendly solution specifically designed for packing and transporting fresh products like cabbage, watermelons, pumpkins, and other similar-sized items. Made from corrugated cardboard, 100% recycled, the box is durable and strong, providing excellent protection for its contents.

The box, with dimensions of 600×400×220 mm, is designed with optimal warehouse and transport space in mind. The ability to fold the box flat significantly increases the number of boxes per pallet, reducing logistics costs and CO2 emissions.

Additionally, the Industrial Box is equipped with an innovative folding mechanism, allowing quick and efficient preparation of the packaging for use. It can be folded manually or with the help of an optional folding robot, enhancing flexibility and production efficiency.

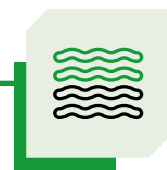
Key Benefits:



Reduces carbon footprint
and CO2 emissions



Easy folding
mechanism



Made from
100% recycled
corrugated cardboard

Possible Applications:

✓ Cucumbers

✓ Carrots

✓ Peppers

✓ Citrus fruits

✓ Cabbage

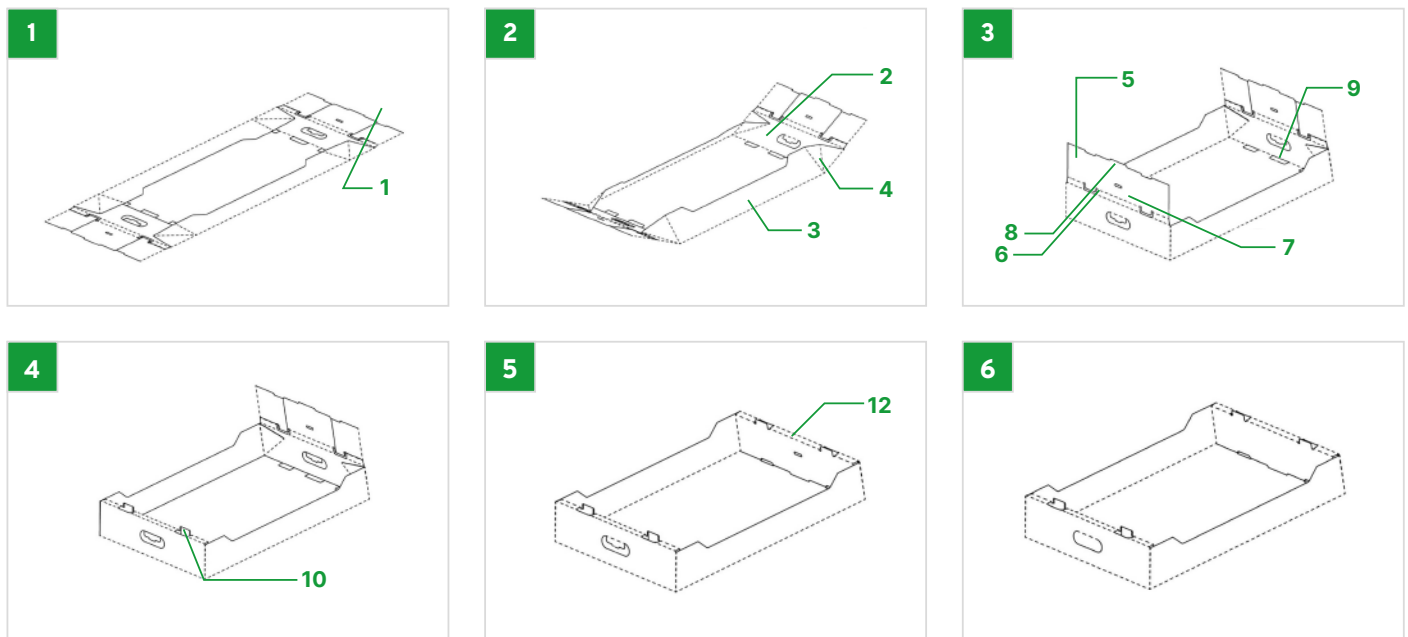
✓ Cauliflower

✓ Watermelons

Features:

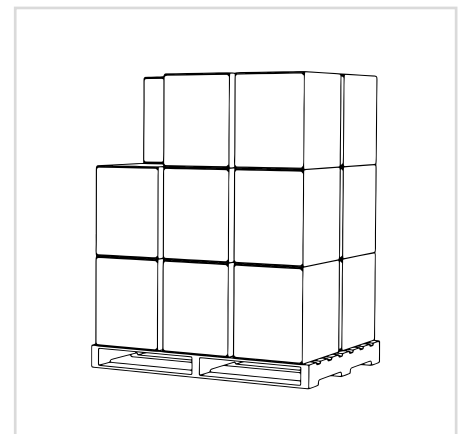
- › Does not contain hot melt glue.
- › Designed for multiple uses.
- › Reduces CO2 emissions compared to traditional boxes.
- › Occupies less space in the warehouse compared to traditional boxes.
- › Made from corrugated cardboard.
- › Printed with water-based inks using flexo technology.
- › Delivered flat (unfolded) for self-assembly.
- › Easy to fold with one hand or using an automated robot.

Folding mechanism:



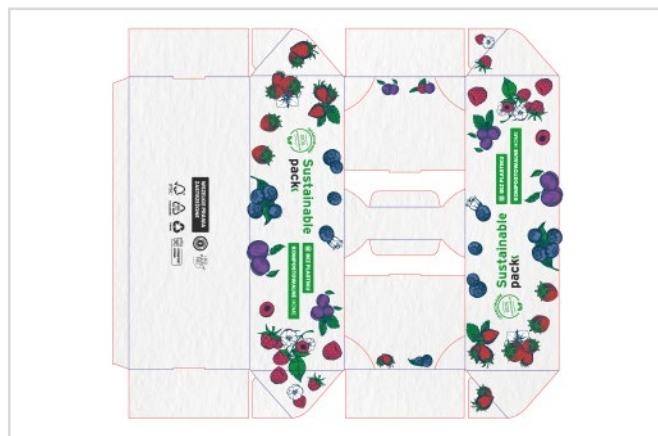
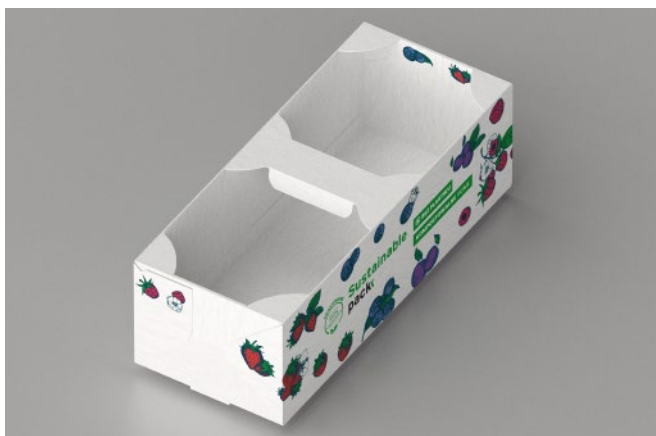
Arrangement on a pallet and in a collection box:

	1 pallet	33 pallets
Stacking pallet 125 cm	210 pcs.	7560 pcs.
Pallet 180 cm	160 pcs.	5280 pcs.
Pallet 200 cm	360 pcs.	6480 pcs.



*The pallet quantities for Industrial were calculated based on program data and may vary from actual values.

Fruit basket 1500g



The 1500g fruit basket is an ecological and functional solution designed specifically for packing and transporting fruit such as strawberries, raspberries, blueberries and other soft fruits. Made of 100% recycled corrugated cardboard, the basket is lightweight, durable and provides excellent protection for fruit, while ensuring its freshness and proper ventilation.

The basket's design allows for efficient use of storage and transport space. The possibility of folding the basket flat allows for an increase in the number of packages on a pallet, which reduces transport costs and CO2 emissions. The fruit basket is easy to fold by hand, which allows for quick and convenient preparation of packages for use.

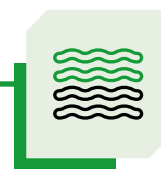
Key Benefits:



Reduces carbon footprint
and CO2 emissions



Easy folding
mechanism



Made from
100% recycled
corrugated cardboard

Possible Applications:

✔ Soft fruits: blueberries, raspberries, blackberries and others of similar size

✔ Soft fruit
✔ Champignons

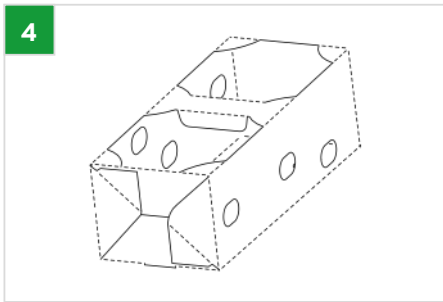
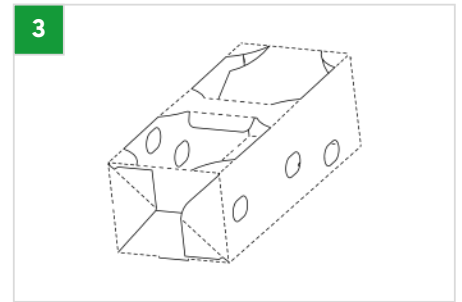
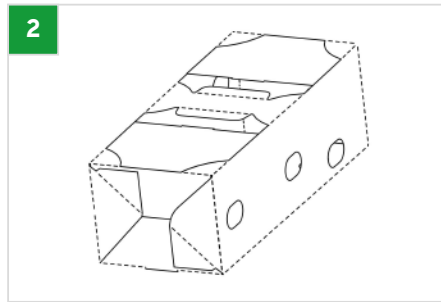
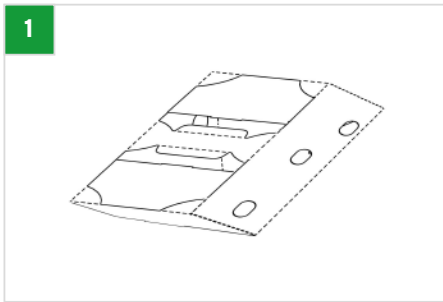
✔ Asparagus
✔ Grapes

✔ Small mushrooms

Features:

- › Does not contain hot melt glue.
- › Designed for multiple uses.
- › Reduces CO2 emissions compared to traditional boxes.
- › Occupies less space in the warehouse compared to traditional boxes.
- › Made from corrugated cardboard.
- › Printed with water-based inks using flexo technology.
- › Delivered flat (unfolded) for self-assembly.
- › Easy to fold with one hand or using an automated robot.

Folding mechanism:



Logistic arrangement on pallets and in shipping cartons:

Quantity	6 pcs.
----------	--------

Available product variants

CompostTray™ and RecyklingTray™

Name	Dimensions (mm) when folded	Capacity for soft fruits (g)	Versions	Material	Sealing	Print
CompostTray™	105×100×44	125 g	<ul style="list-style-type: none"> › With solid bottom › With transparent bottom and foil (100% compost Home) 	<ul style="list-style-type: none"> › Kraft paper (100% compost Home) › Corrugated board (100% compost Home) 	<ul style="list-style-type: none"> › Top seal (100% compost foil) › Flow pack (100% compost foil) 	Water-based ink: <ul style="list-style-type: none"> › Flexo print › Offset print › Digital print
CompostTray™	170×105×60	250 g	<ul style="list-style-type: none"> › With solid bottom › With transparent bottom and foil (100% compost Home) 	<ul style="list-style-type: none"> › Kraft paper (100% compost Home) › Corrugated board (100% compost Home) 	<ul style="list-style-type: none"> › Top seal (100% compost foil) › Flow pack (100% compost foil) 	Water-based ink: <ul style="list-style-type: none"> › Flexo print › Offset print › Digital print
CompostTray™	170×105×80	500 g	<ul style="list-style-type: none"> › With solid bottom › With transparent bottom and foil (100% compost Home) 	<ul style="list-style-type: none"> › Kraft paper (100% compost Home) › Corrugated board (100% compost Home) 	<ul style="list-style-type: none"> › Top seal (100% compost foil) › Flow pack (100% compost foil) 	Water-based ink: <ul style="list-style-type: none"> › Flexo print › Offset print › Nadruk Cyfrowy
RecyklingTray™	105×100×44	125 g	<ul style="list-style-type: none"> › With solid bottom › With transparent bottom and foil (100% compost Home) 	<ul style="list-style-type: none"> › Corrugated cardboard recycled 	<ul style="list-style-type: none"> › Top seal (100% compost foil) › Flow pack (100% compost foil) 	Water-based ink: <ul style="list-style-type: none"> › Flexo print › Offset print › Digital print
RecyklingTray™	170×105×60	250 g	<ul style="list-style-type: none"> › With solid bottom › With transparent bottom and foil (100% compost Home) 	<ul style="list-style-type: none"> › Corrugated cardboard recycled 	<ul style="list-style-type: none"> › Top seal (100% compost foil) › Flow pack (100% compost foil) 	Water-based ink: <ul style="list-style-type: none"> › Flexo print › Offset print › Digital print
RecyklingTray™	170×105×80	500 g	<ul style="list-style-type: none"> › With solid bottom › With transparent bottom and foil (100% compost Home) 	<ul style="list-style-type: none"> › Corrugated cardboard recycled 	<ul style="list-style-type: none"> › Top seal (100% compost foil) › Flow pack (100% compost foil) 	Water-based ink: <ul style="list-style-type: none"> › Flexo print › Offset print › Digital print

Industrial Boxes

Name	Dimensions (mm) when folded	Dimensions (mm) for transport	Designer for	Material	Print
Packaging for Blueberries	300×200×100	295×195	Blueberries, mushrooms, cherries, sour cherries, plums	› Corrugated board 100% recycled	Water-based ink: › Flexo print
Packaging 6 kg	400×300×150	715×390	Tomatoes, cucumbers	› Corrugated board 100% recycled	Water-based ink: › Flexo print
Packaging 7 kg	600×400×100	820×390	Cherry tomatoes, cucumbers, leeks	› Corrugated board 100% recycled	Water-based ink: › Flexo print
Packaging for plums 9 kg (6+1,5 kg)	600×400×135	890×390	Plums	› Corrugated board 100% recycled	Water-based ink: › Flexo print
Packaging 10 kg	600×400×150	920×390	Broccoli, lettuce	› Corrugated board 100% recycled	Water-based ink: › Flexo print
Packaging 14 kg	600×400×175	965×390	Potatoes, apples, fruits/vegetables	› Corrugated board 100% recycled	Water-based ink: › Flexo print
Packaging 20 kg	600×400×220	1055×390	Cabbage, watermelons, pumpkins	› Corrugated board 100% recycled	Water-based ink: › Flexo print





Optional Machines for Packaging Folding

- › Discover automation possibilities
- › Automated line
- › Unfolding robot

Discover automation possibilities

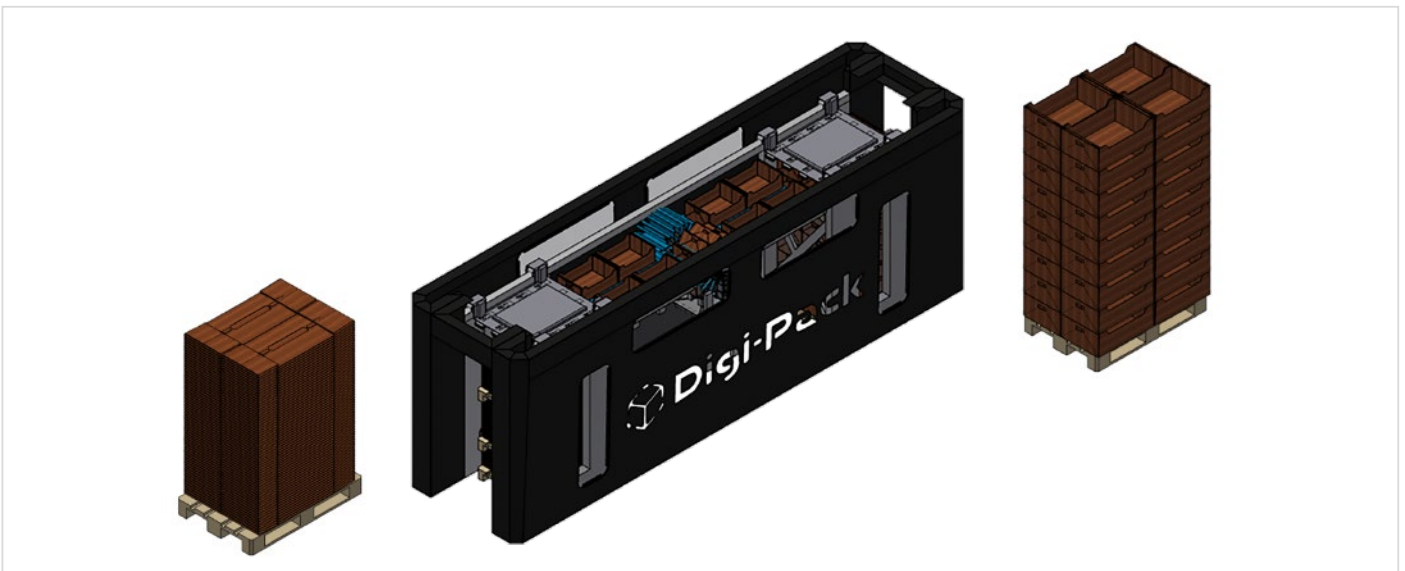
At Sustainable Pack, we offer two advanced automation solutions that enable the optimization of production processes.

Depending on our clients' needs:

➤ Automated production line

➤ Robotic production system

Automated Line



Unfolding Robot

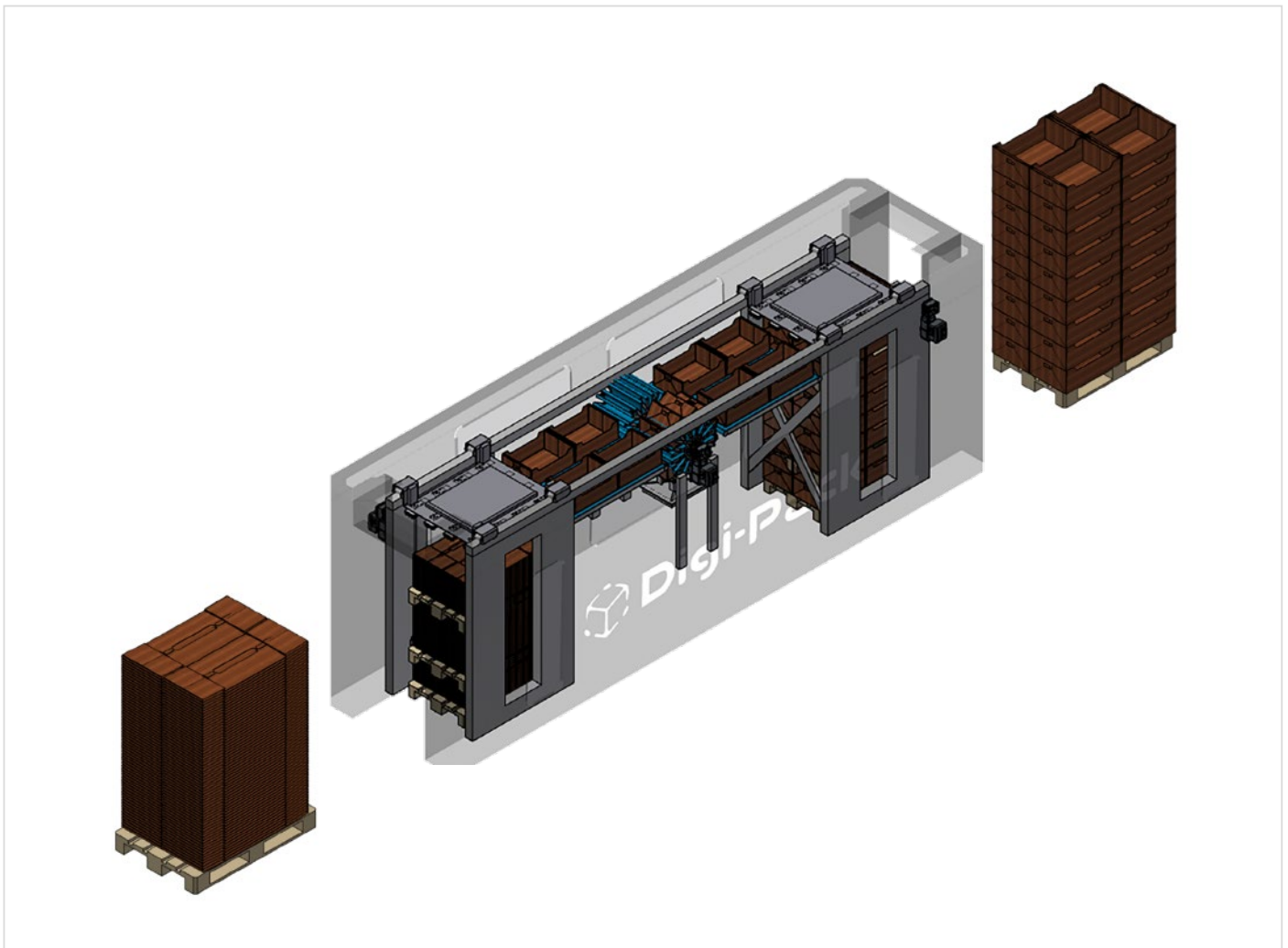


Automated line

Our efficient, fully automated line allows for **fast and precise folding** and handling of cardboard packaging. It is the ideal solution for companies looking for large-scale production and consistent quality. This system can be easily integrated into existing processes, and its flexibility allows for quick adaptation to new types of products, such as cartons and crates. This effective solution supports continuous production growth with minimal employee involvement.

Key functions of the line include:

- Ability to unfold IFCO and EPS crates
- Flexibility
- Easy retooling

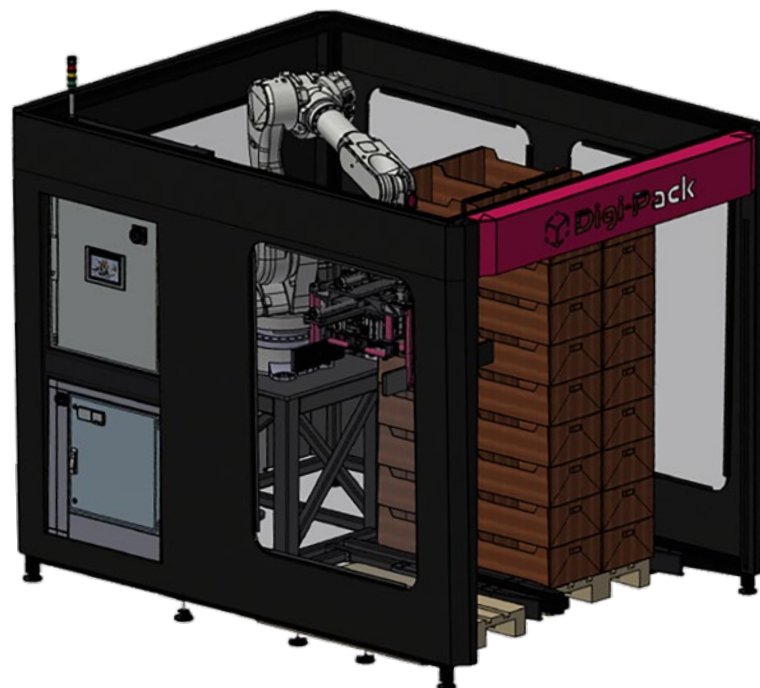


Unfolding robot

For companies looking for a more compact and versatile solution, we offer robot-based systems. Our robots are responsible for **picking, unfolding, and stacking cartons, ensuring accuracy and high quality** in every production cycle. This solution helps optimize costs, reduce the number of employees, and at the same time ensures consistent quality and performance at the highest level. Automation is the ideal option for companies that want to take advantage of flexibility in production and increase efficiency with smaller production batches.

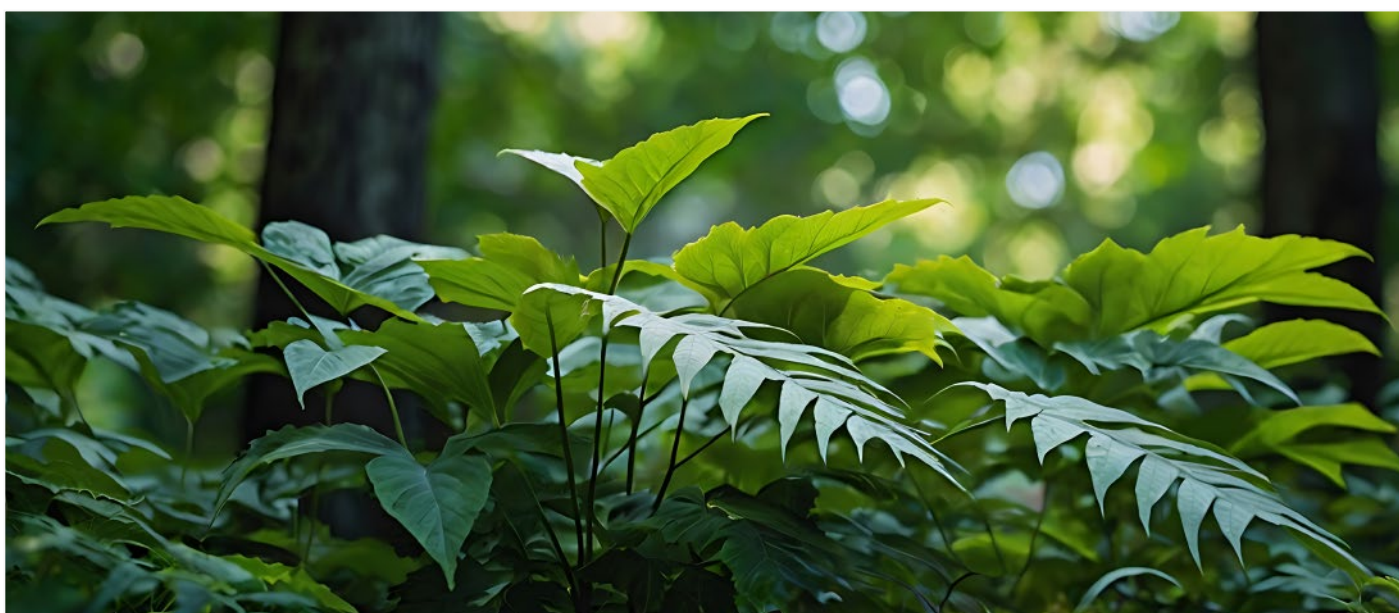
Key functions of the robot include:

- Carton picking
- Unfolding cartons
- Stacking unfolded cartons on pallets

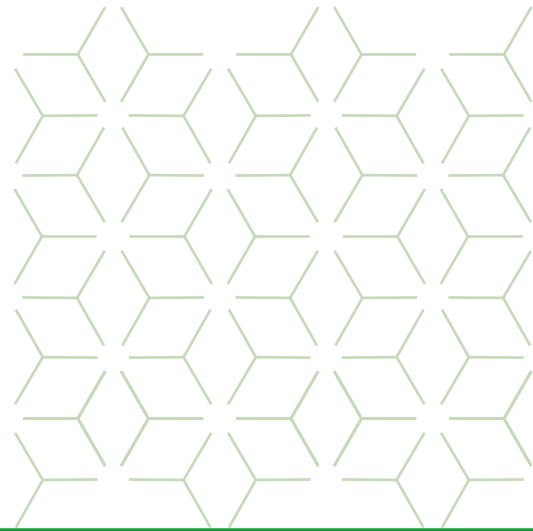




Sustainable pack







Sustainable pack



+48 604 487 737



biuro@sustainablepack.pl



ul. Gorzycka 8,
63-400 Ostrów Wielkopolski, Poland

